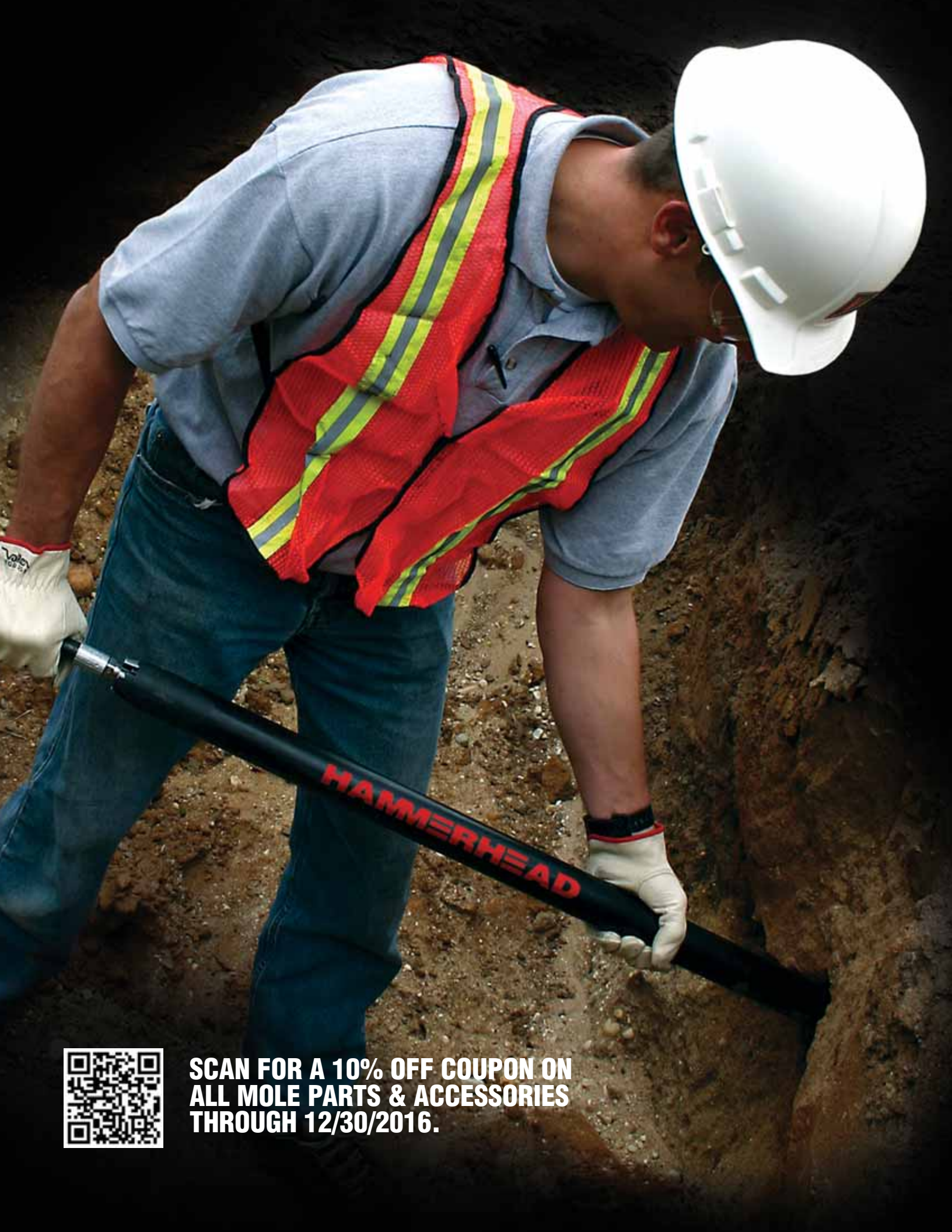




CATALOG 2016

PIERCING TOOL
PARTS & ACCESSORIES



**SCAN FOR A 10% OFF COUPON ON
ALL MOLE PARTS & ACCESSORIES
THROUGH 12/30/2016.**

HAMMERHEAD MOLE PIERCING TOOLS

Reciprocating Head Models (Catamount & Active Head®).....	4
Non-Reciprocating Head Models.....	5
Moletrac® Front Head Locatable Models	6-7

STANDARD ACCESSORIES

Lubricants	8
Oilers.....	8
Hoses and Fittings.....	9
Gel Cap Hose Covers.....	9
Replacement Whip Hoses	10
Non-Conductive Whip Hoses.....	10
Expanders.....	10
Pipe Pushers	10
Stepped Heads	11
Gumbo Heads.....	11
Lock Down Heads.....	11
Aiming Sights and Launching Platforms	12-13

PULLING ACCESSORIES

Pulling Carrots.....	14
Pulling Eyes.....	14
Tap Pullers.....	15
Die Pullers	15
Pipe Pilots	16
Stick Pipe Pulling Kits	17

MAINTENANCE TOOLS

Sockets and Wrenches.....	19
Reciprocating Head Maintenance Kits	19
Miscellaneous.....	19

COMPLETE TOOL LISTINGS

2.00" (50 mm) Piercing Tools.....	20-23
2.50" (67 mm) Piercing Tools.....	24-29
3.00" (75 mm) Piercing Tools.....	30-34
3.50" (89 mm) Piercing Tools.....	35-36
4.00" (98 mm) Piercing Tools.....	37-39
4.375" (111 mm) Piercing Tools.....	40
5.125" (130 mm) Piercing Tools.....	41-43
5.50" (140 mm) Piercing Tools.....	44
5.625" (143 mm) Piercing Tools.....	45
5.75" (145 mm) Piercing Tools.....	46

Reciprocating Head Piercing Tools

Catamount and Active Head



FOR TOUGH GROUND CONDITIONS, YOU NEED EXTRA POWER TO MUSCLE THROUGH. CATAMOUNT AND ACTIVE HEAD® DO THE JOB.

Model	Part Number	Domestic Package PN	International Package PN	Diameter in (mm)	Length in (cm)	Weight lb (kg)	Air cfm (L/min)	Tailbolt Access	Pressure psi (bar)
2.00" (50) AH PP SW BL	21744	21744-1	21744-2	2.00 (50)	30.24 (76.8)	19 (8.6)	15 (425)	n/a	110 (7.6)
2.00" (50) AH PP BL	21722	21722-1	21722-2	2.00 (50)	40.88 (103.8)	24 (11)	18 (510)	n/a	110 (7.6)
2.50" (67) CAT PP DF	26022	26022-1	26022-2	2.64 (67)	49.3 (125.2)	50 (23)	31 (878)	4	110 (7.6)
2.50" (67) AH PP DF	25922	25922-1	25922-2	2.64 (67)	49.9 (126.7)	50 (23)	31 (878)	4	110 (7.6)
3.00" (75) CAT PP DF	30822	30822-1	30822-2	3.00 (75)	50.6 (128.6)	69 (31)	32 (906)	4	110 (7.6)
3.00" (75) AH PP DF	31022	31022-1	31022-2	3.00 (75)	52.5 (133.4)	67 (30)	35 (991)	4	110 (7.6)
3.50" (89) CAT PP DF	35122	35122-1	35122-2	3.50 (89)	59.0 (149.9)	99 (45)	53.5 (1,515)	5	110 (7.6)
4.00"(100) CAT PP DF	40322	40322-1	40322-2	3.96 (100)	65.8 (167)	148 (67)	65 (1,840)	6	110 (7.6)
4.375" (111) CAT PP DF	43222	43222-1	43222-2	4.38 (111)	62.44 (158.6)	180 (82)	90 (2,549)	7	110 (7.6)
5.125" (130) CAT PP DF	51322	51322-1	51322-2	5.13 (130)	71.7 (182.0)	257 (117)	160 (4,530)	8	110 (7.6)

AH-Active Head®, CAT-Catamount, PP-Power Port®, SW-Sidewalker, BL-Boltless, DF-Debris Free



INSTALL SEWER, WATER, GAS, ELECTRIC, FIBER, IRRIGATION AND CABLE

Non-Reciprocating Head Tools

Replaceable Head and Solid Body

Non-Reciprocating Tools



THE ORIGINAL MOLE THAT STARTED A TRENCHLESS REVOLUTION...PRODUCTIVE AND DEPENDABLE PERFORMANCE IN MOST SOILS.

Model	Part Number	Domestic Package PN	International Package PN	Diameter in (mm)	Length in (cm)	Weight lb (kg)	Air cfm (L/min)	Tailbolt Access	Pressure psi (bar)
2.00" (50) RH SR	20222	20222-1	20222-2	2.06 (50)	45.3 (115)	28 (13)	22 (623)	4	110 (7.6)
2.00" (50) RH PP BL	21733	21733-1	21733-2	2.06 (50)	39.0 (99.1)	24 (11)	18 (510)	n/a	110 (7.6)
2.50" (67) RH SR	25222	25222-1	25222-2	2.64 (67)	48.25 (122.6)	50 (23)	31 (878)	4	110 (7.6)
2.50" (67) RH PP DF	25522	25522-1	25522-2	2.64 (67)	48.25 (122.6)	50 (23)	31 (878)	4	110 (7.6)
2.50" (67) RH PP SW DF	26622	26622-1	26622-2	2.64 (67)	33.9 (86.1)	31 (14)	21.5 (609)	4	110 (7.6)
3.00" (75) RH SR	30222	30222-1	30222-2	3.00 (75)	52.18 (132.5)	67 (30)	32 (906)	4	110 (7.6)
3.00" (75) RH PP DF	31222	31222-1	31222-2	3.00 (75)	51.7 (131.3)	67 (30)	35 (991)	4	110 (7.6)
3.00" (75) RH PP SW DF	31622	31622-1	31622-2	3.00 (75)	41.6 (105.7)	50 (23)	33 (934)	4	110 (7.6)
3.50" (89) RH PP DF	35022	35022-1	35022-2	3.50 (89)	59.0 (149.9)	94 (43)	53.5 (1,515)	5	110 (7.6)
4.00" (98) RH PP DF	40422	40422-1	40422-2	3.88 (98.43)	62.8 (159.5)	131 (59)	64 (1,812)	6	110 (7.6)
4.00" (98) RH SR	38222	38222-1	38222-2	3.88 (98)	63.95 (162.4)	136 (62)	68 (1,926)	6	110 (7.6)
5.125" (130) SR	51222	51222-1	51222-2	5.125 (133)	65.92 (167.4)	214 (97)	98 (2,775)	8	110 (7.6)
5.125" (130) PP DF	51422	51422-1	51422-2	5.25 (133.4)	64.8 (164.6)	244.8 (111)	160 (4,531)	8	110 (7.6)
5.50" (140) SR BU	58222	58222-1	58222-2	5.50 (140)	63.95 (162.4)	170 (77)	68 (1,926)	6	110 (7.6)
5.625" (143) PP BU DF	51722	51722-1	51722-2	5.63 (142.9)	64.8 (164.6)	247.9 (113)	160 (4,531)	8	110 (7.6)
5.75" (145) SR	60222	60222-1	60222-2	5.88 (149)	79.5 (201.9)	305 (138)	132 (3,738)	8	110 (7.6)

RH-Replaceable Head, SR-Screw Reverse, PP-Power Port®, SW-Sidewalker, BL-Boltless, DF-Debris Free, BU-Bulbed

MOLE PACKAGE INCLUDES



Piercing Tool, Oiler, Hose and Fittings

HAMMERHEAD®

Moletrac® Locatable Piercing Tools

TRACK YOUR HAMMERHEAD MOLE®



THE FIRST PROVEN FRONT LOCATING SYSTEM FOR PIERCING TOOLS, COUPLED WITH DEPENDABLE SUBSITE® ELECTRONICS.

Model	Part Number	Domestic Package PN	International Package PN	Diameter in (mm)	Length in (cm)	Weight lb (kg)	Air cfm (L/min)	Tailbolt Access	Pressure psi (bar)
2.50" (67) RH SR MT	26322	26322-1	26322-2	2.64 (67)	53.60 (136.1)	52 (24)	31 (878)	4	110 (7.6)
2.50" (67) RH PP DF MT	23622	23622-1	23622-2	2.64 (67)	52.80 (98.8)	51 (23)	31 (878)	4	110 (7.6)
2.50" (67) RH PP SW MT	26722	26722-1	26722-2	2.64 (67)	39.86 (101.2)	35 (16)	21.5 (609)	4	110 (7.6)
3.00" (75) RH SR MT	30322	30322-1	30322-2	3.00 (75)	56.80 (144.3)	68 (31)	32 (906)	4	110 (7.6)
3.00" (75) RH PP DF MT	31422	31422-1	31422-2	3.00 (75)	55.80 (141.7)	66 (30)	35 (991)	4	110 (7.6)
3.00" (75) RH PP SW MT	30322	30322-1	30322-2	3.00 (75)	47.56 (120.8)	54 (24)	33 (934)	4	110 (7.6)
3.50" (89) RH PP DF MT	35222	35222-1	35222-2	3.50 (89)	61.60 (156.5)	96 (44)	53.5 (1,515)	5	110 (7.6)
4.00" (98) RH PP DF MT	40522	40522-1	40522-2	3.88 (98)	66.60 (169.2)	133 (60)	64 (1,812)	6	110 (7.6)
4.00" (98) RH SR MT	38322	38322-1	38322-2	3.88 (98)	67.60 (171.7)	132 (60)	68 (1,926)	6	110 (7.6)
5.50" (140) SR BU MT	58122	58122-1	58122-2	5.50 (140)	67.60 (171.7)	169 (77)	68 (1,926)	6	110 (7.6)

RH—Replaceable Head, SR—Screw Reverse, PP—Power Port®, SW—Sidewalker, BL—Boltless, DF—Debris Free, BU—Bulbed, MT—Moletrac®



MOLETRAC® ACCESSORIES

Description	Part Number
Beacon Housing Kit, 2.50" & 3.00" RH Tools (Incl housing, beacon cap assy and beacon sleeve)	30732
Beacon Housing Kit, 3.50" & 4.00" RH Tools (Incl housing, beacon cap assy and beacon sleeve)	30733
BI Beacon 2.50–4.00" RH Tools (AccuView Cam Receiver)	30737
AccuView® Cam Receiver for 2.50–4.00" RH Tools	912-5669
Beacon Cap Assy 2.50–4.00" RH	30731
Beacon Sleeve	30730
Socket, 3/4" Drive, 22 mm	30741



KEEP TRACK OF THE BORE PATH

MOLETRAC® is a proven and reliable front locating accessory kit for HammerHead Mole® piercing tools. Coupled with the dependable BI Impact Beacon and Accu-View® Cam receiver from Subsite® Electronics, the MOLETRAC system allows tracking of your piercing tool up to 10-ft (3 m) deep.

PROVEN ELECTRONICS

The BI Impact Beacon is proven in high energy impact conditions seen in piercing tools and has a 24 hour battery life. Using the AccuView Cam receiver you can track the position, depth and direction of travel of the bore.

NEED TO LOCATE UTILITIES TOO?

The AccuView Cam receiver is compatible with the optional UtiliGuard Basic 5 Watt transmitter making it one of the most efficient, cost-effective systems for locating and avoiding buried telephone, CATV, power, gas and water lines.

CONVERT YOUR CURRENT MOLE*

Conversion of your piercing tool is simple. The MOLETRAC kit is compatible with many HammerHead Mole replaceable head tool models from 2.50–4.00" (63–98mm) and are only available from your authorized HammerHead dealer.



*Contact factory for tool serial number break.

Lubricants & Oilers

Standard Accessories

HAMMERHEAD MOLE® OIL

This specially formulated lubricant is the preferred choice for all HammerHead piercing tools. Delivering performance and reliability during most weather conditions.

Description	Part Number
HammerHead Mole Oil, 1-Gallon Jug	2202
HammerHead Mole Oil, Case, (4) 1-Gallon Jugs	30273
HammerHead Mole Oil, 5 Gallon Pail	1041
HammerHead Mole Oil, 55 Gallon Drum	1040



BIO/WINTER OIL

This specially formulated, biodegradable oil is an excellent choice for all HammerHead piercing tools for all seasons and provides superior anti-wear and extreme pressure protection. Environmentally friendly, this lubricant is also suitable for cold weather operation in temperatures as low as -25° F.

Description	Part Number
HammerHead Mole Bio/Winter Oil, 1 Gallon Jug	1085
HammerHead Mole Bio/Winter Oil, Case, 4-1 Gallon Jugs	1075
HammerHead Mole Bio/Winter Oil, 5 Gallon Pail	1076
HammerHead Mole Bio/Winter Oil, 55 Gallon Drum	1077



1150 Oiler

IN-LINE OILERS

Lubrication is essential to the longevity and performance of HammerHead Mole piercing tools. In-line oilers provide constant lubrication of your tool. Use genuine HammerHead lubricants for optimum performance and protection.

Description	Part Number	Capacity oz (ml)	Models in (mm)
Oiler Assembly, Standard	1150		2.00-5.125 (50-140)*
Oiler Assembly, Euro	1151		2.00-5.125 (50-140)*
Oiler Assy, 5.125" PP, Standard	1660		5.125 & 5.625 (140 & 143)
Oiler Assy, 5.125" PP, International	1672		5.125 & 5.625 (140 & 143)
Oiler, Large Tool	1300		5.75 (145)

*Only use with 5.125" (140 mm) SR tool.



1660 Oiler

IN-LINE REGULATOR

Regulate the air pressure to the factory recommended 110 PSI (7.6 Bar) when air pressure coming from the air compressor is higher than 110 psi.

Description	Part Number
In-line Regulator Assembly	1647



1647 Regulator

Hoses, Fittings and Hose Covers

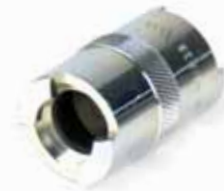
Standard Accessories

AIR SUPPLY HOSES

Description	Part Number	Models in (mm)	Couplers Required
Hose, 5/8" X 50' (15 m) w/out couplers	1032	2.00 (50)	17241 (1), 30319 (1)
Hose, 5/8" X 65' (20 m) w/out couplers	1098	2.00 (50)	17241 (1), 30319 (1)
Hose, 5/8" X 82' (25 m) w/out couplers	1099	2.00 (50)	17241 (1), 30319 (1)
Hose, 3/4" X 50' (15 m) w/out Couplers	1034	2.50-4.375 (67-111) 5.50 (140)	30319 (2)
Hose, 3/4" X 65' (20 m) w/out Couplers	1109	2.50-4.375 (67-111) 5.50 (140)	30319 (2)
Hose, 3/4" X 82' (25 m) w/out Couplers	1128	2.50-4.375 (67-111) 5.50 (140)	30319 (2)
Hose, 1.00" X 50' (15 m) w/out Couplers	1036	5.125 SR	30319 (2)
Hose, 1.00" X 65' (20 m) w/out Couplers	1129	5.125 SR	30319 (2)
Hose, 1.00" X 82' (25 m) w/out Couplers	1104	5.125 SR	30319 (2)
Hose, 1.25" X 50' (15 m), SJIC (F)	1030	5.75 SR	n/a
Hose, 1.25" X 50' (15 m) w/ Couplers	1031	5.75 SR	n/a
Hose, 1.25" X 50' (15 m) w/ Couplers	1089	5.125 PP	n/a
Hose, 1.25" X 65' (20 m) w/ Couplers	1106	5.125 PP	n/a
Hose, 1.25" X 82' (25 m) w/ Couplers	1107	5.125 PP	n/a
Hose, Oiler Supply, 3/4" X 50' (15 m), Contractor Gold	1043		n/a



1007



1009



1117 Assy (1118 & 1119)



17241

FITTINGS AND COVERS

Description	Part Number
Single Lock Coupling (F) X 3/4" MNPT	1007
Single Lock Coupling, F X F	1009
Assembly, Quick Reverse Swivel	1117
Swivel Plug (M) X 3/4" FNPT	1118
Swivel Coupler Socket (F) X 3/4" MNPT	1119
Quick Connect (M) X -8 (M) JIC w/ Lock Ring	17241
Quick Connect (F) X 3/8" FNPT	17242
Single Lock Coupling (F) X 3/4" FNPT	30214
Single Lock Coupling (M) X 3/4" MNPT w/ Lock Ring	30319
Single Lock Coupling (F) X 3/4" FNPT	40214
Claw Fitting, Oiler, Claw X 3/4" MNPT (DOM)	1001
Claw Fitting, Oiler, Claw X 3/4" MNPT (INTL)	1027
-8 (M) JIC X 3/4" MNPT	914-0102
Gel Cap, Hose Cover, 2.00" Tools	20797
Gel Cap, Hose Cover, 2.50-4.00" Tools	2029
Swivel Plug (M) X 1.00" FNPT	1661
Swivel Coupler Socket (F) X 1.00" MNPT	1668
Quick Connect (M) X 1.00" (M) JIC w/ Lock Ring	51429
Single Lock Coupling (F) X 1.00" FNPT	51425



17242



30319



30214



40214



Gel Cap Hose Cover



914-0102

Visit our website at www.hammerheadtrenchless.com.
For ordering or pricing information, contact your local authorized HammerHead dealer.

Whip Hoses and Expanders

Standard Accessories

QUICK CHANGE WHIP HOSES

Description	Part Number
External Whip, 2.00" PP Tools	20727
External Whip, 2.00" SR Tools	17227
External Whip, 2.50–3.00" PP, 3.50–4.00" Tools	40227
External Whip, 2.50–3.00" SR Tools	30227
External Whip, 4.375" PP Tools	43227
External Whip, 5.125" PP Tools	51418
External Whip, 5.125" SR Tools	51227
External Whip, 5.75" SR Tools	60227



INSULATED NON CONDUCTIVE QUICK CHANGE WHIP HOSES

Description	Part Number
Insulated External Whip, 2.00" PP Tools	20799
Insulated External Whip, 2.00" SR Tools	20505
Insulated External Whip, 2.50–3.00" PP, 3.50–4.00" Tools	40229
Insulated External Whip, 2.50–3.00" SR Tools	30327



NOTE: 20799 replaces entire whip hose. All HammerHead non-conductive hoses meet SAE 100R7 Electrical Conductivity Test. Maximum leakage shall not exceed 50 microamperes when subjected to 75kV/Ft. for five minutes.

SLIP ON EXPANDERS

Expanders are an economical solution for expanding the bore diameter after the initial bore is made.

Description	Part Number
3.00" Expander for 2.00" RH Tools	20270
3.75" Expander for 2.50" RH Tools	25270
4.00" Expander for 3.00" RH Tools	30270
5.50" Expander for 3.50" RH Tools	35063
5.50" Expander for 4.00" RH & 5.50" RH BU Tools	37270
6.00" Expander for 4.00" RH & 5.50" RH BU Tools	37273
7.00" Expander for 4.00" RH & 5.50" RH BU Tools	37274
7.50" Expander for 5.125" Solid Body Tools	51270
8.00" Expander for 5.75" Solid Body Tools	60270
10.00" Expander for 5.75" Solid Body Tools	60273

For use in reciprocating head tools, please refer to the individual tool listings for availability and special usage instructions.



PIPE PUSHERS

Replace the anvil nut of your non-reciprocating head tool with a pipe pusher to aid in the extraction of steel and galvanized service lines.

Description	Part Number
Pipe Pusher, 2.50" & 3.00" RH Tools	25255



Specialized Head Options

Standard Accessories

Special Heads

STEPPED HEADS

Prefer a stepped head for your replaceable head models? Our stepped heads are the perfect option for your non-reciprocating head tools.

Description	Part Number
Stepped Head, 2.00" RH Tools	20795
Stepped Head, 2.50" RH Tools	25256
Stepped Head, 3.00" RH Tools	30623
Stepped Head, 3.50" RH Tools*	35064
Stepped Head, 4.00" RH & 5.50" RH BU Tools*	40446

*Requires factory installation on 3.50" and larger tools.



GUMBO HEADS

An aggressive head designed for soils where additional friction is a must. Decreases swim by biting into the clay and holding on until the next strike.

Description	Part Number
Gumbo Head, 2.00" RH Tools	20796
Gumbo Head, 2.50" RH Tools	25257
Gumbo Head, 3.00" RH Tools	30624
Gumbo Head, 3.50" RH Tools*	35065
Gumbo Head, 4.00" RH & 5.50" RH BU Tools*	40447

*Requires factory installation on 3.50" and larger tools.



LOCK-DOWN HEADS

Converts a reciprocating head tool to a non-reciprocating head tool increasing performance in loose or softer soils.

Description	Part Number
Lock Down Head, 2.00" AH Tools	20737
Lock Down Head, 2.50" AH Tools	25178
Lock Down Head, 3.00" AH Tools	30538
Lock Down Head, 2.50" CAT Tools	26023
Lock Down Head, 3.00" CATJN Tools	30817
Lock Down Head, 3.00" CAT Tools	30937
Lock Down Head, 3.50" CAT Tools	35066
Lock Down Head, 4.00" CAT Tools	40326
Lock Down Head, 4.375" CAT Tools	43256
Lock Down Head, 5.125" CAT Tools	51348



Visit our website at www.hammerheadtrenchless.com.

For ordering or pricing information, contact your local authorized HammerHead dealer.

HAMMERHEAD





START YOUR BORE RIGHT

Accurate bore shots are critical to the bottom line, that's why HammerHead offers aiming and launching equipment that assures the piercing tool is aligned both vertically and horizontally before the bore is begun.

Launching Accessories

Standard Accessories

AIMING SIGHT

The telescopic aiming sight can be adjusted vertically to accommodate depth of entry pit and height of operator. This rugged and light weight aiming sight has a removable scope for safe transport.

Description	Part Number
Kit, Aiming Sight and Stake	40145
Aiming Sight	40140
Pole, Target Staff	40146
Level, HammerHead Mole	31258



Aiming Sight and Stake Kit, PN: 40145



HammerHead Mole Level, PN:31258

LAUNCH CRADLES

Piercing tools can be adjusted both vertically and horizontally with the launching cradle. Post holes are incorporated into the base to for proper anchoring. Two models are available to accommodate tool sizes ranging from 2.00–5.125".

Description	Part Number
Launching Platform Kit, 2.00–3.00" (50-75 mm tools)	30160
Replacement Platform Stakes	30159
Launching Platform Kit, 3.50" (89 mm) tools and larger	925-0001
Replacement Large Platform Stakes	925-0002
Adjustment Shaft (For use with 5.75" (146 mm) Tool)	925-0004



Launching Platform Kit, 2.00–3.00" Tools, PN: 30160

TRENCH SUPPORT FRAME

Constructed of lightweight aluminum, the trench support frame can be braced against pit walls and adjusted infinitely to accommodate pit sizes from 39.50–55.50" (100–140 cm). No anchor pins are needed, eliminating the need to daylight utilities below the bore. In addition, they can be placed at any depth, simplifying grade adjustments.

The trench support frame from HammerHead is designed to be retro-fit with existing launch cradle kits from various manufacturers. Available only for tools from 1.75–3.00" (45–75 mm).



Launching Platform Kit, 3.50" tools and larger, PN: 925-0001

Description	Part Number
Trench Support Frame (Launch Cradle not included)	30170



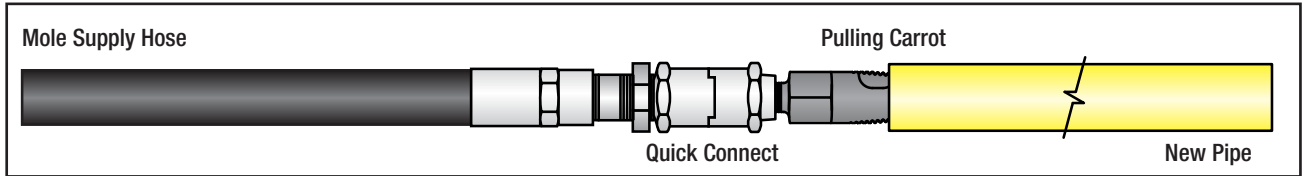
Trench Support Frame (Launch Cradle and tool not included), PN: 30170

Visit our website at www.hammerheadtrenchless.com.
For ordering or pricing information, contact your local authorized HammerHead dealer.

Pulling Carrots & Pulling Eyes

Pulling Accessories

CARROT PULLERS



Description	Pipe Dia Range in (mm)	Tool Models	Part Number
Pulling Carrot, 0.50–1.00" Pipe, 3/8" MNPT	0.50–1.00 (12.7–25.4)	2.00" (50mm)	17248
Pulling Carrot, 0.50–1.00" Pipe, 1/2" MNPT	0.50–1.00 (12.7–25.4)	2.50–4.375" (67–111mm) 5.50" (140 mm)	30445



PULLING EYES



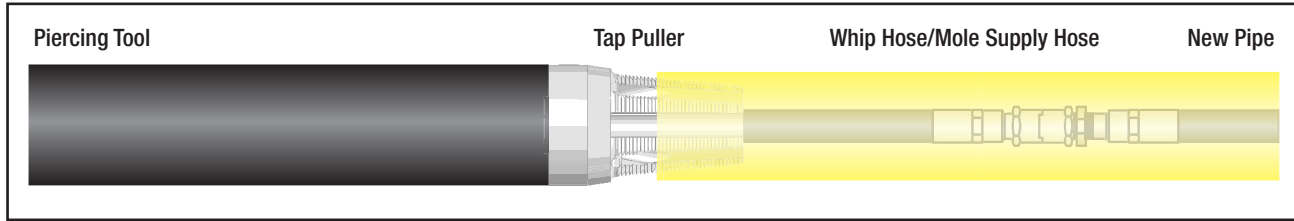
Description	Tool Models	Part Number	Quick Links (not included)
Pneumatic Fitting with Eyebolt, 3/8" FNPT	2.00" (50mm)	20794	30333
Pneumatic Fitting with Eyebolt, 1/2" FNPT	2.50–4.375" (67–111mm) 5.50" (140 mm)	30293	30302
Pneumatic Fitting with Eyebolt, 1/2" FNPT (5.125" PP)	5.125" PP	51426	43244



Tap and Die Pullers

Pulling Accessories

TAP PULLERS



Description	Tool Models	Pipe Type	Pipe Dia Range in (mm) (ID)	Part Number
Tap Puller, 2.00", 2.50" (67mm) PP Tools	2.50 (67) PP DF	PE	1.90–2.10 (49–53)	25609
Tap Puller, 2.00", 2.50" (67mm) SR Tools	2.50 (67) SR	PE	1.90–2.10 (49–53)	25265
Tap Puller, 2.00", 3.00" (75mm) PP Tools	3.00 (75) PP DF	PE	1.90–2.10 (49–53)	30706
Tap Puller, 2.00", 3.00" (75mm) SR Tools	3.00 (75) SR	PE	1.90–2.10 (49–53)	30446
Tap Puller, 4.00", 4.00" (98mm) SR Tools (4 in tool requires 5.50" Expander, PN: 37270)	4.00 (98) SR 5.50 (140) SR	PE	1.97–2.09 (50–53)	55265

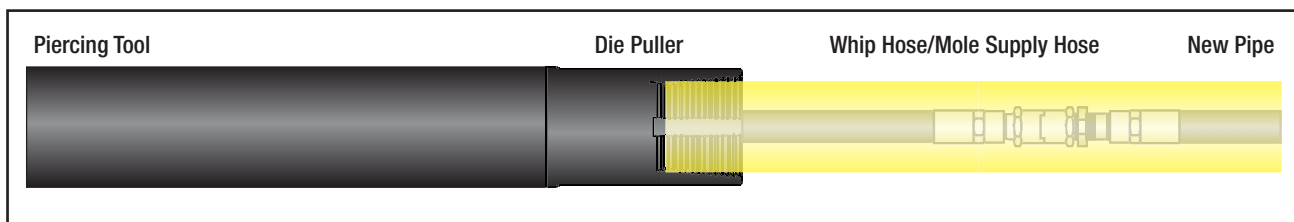


Tap Puller



Die Puller

DIE PULLER



Description	Tool Models	Pipe Type	Pipe Dia Range in (mm) (OD)	Part Number
Die Puller, 2.00" (50 mm) BL Tools	2.00 (50) BL	PE	(1.47–1.57) 37.5–40	21730

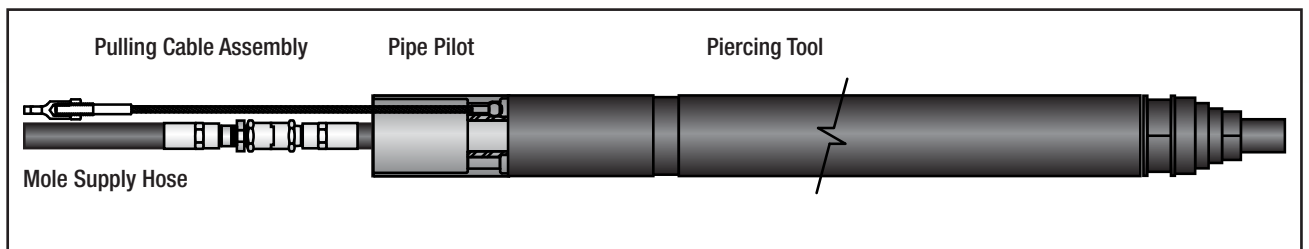
Pipe Pilots

Pulling Accessories

PIPE PILOTS



25610 Pipe Pilot Kit, 2.50" PP DF (2.00" Plastic Pipe)
Shown with pulling cable assembly and optional clevis nut.

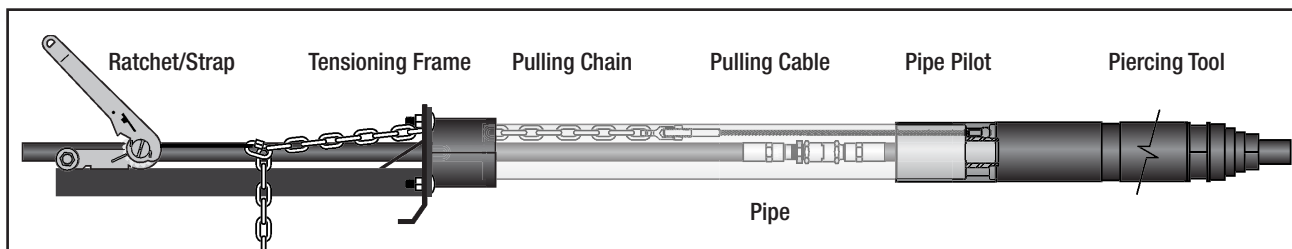


Description	Pilot Assembly Kit	Pulling Cable Assembly (not included)	Clevis Nut (Optional)	Quick Link (not included)	Pipe Max. OD in (mm)	Pipe Min. ID in (mm)
Pipe Pilot Kit, 2.50" PP DF (2.00" Plastic Pipe)	25610	30285	30304	30302	2.375 (60)	1.92 (48)
Pipe Pilot Kit, 2.50" SR (1.50" Plastic Pipe)	25281	25284	30304	30302	2.376 (60)	1.97 (50)
Pipe Pilot Kit, 3.00" PP DF (2.00" Plastic Pipe)	30710	30285	30304	30302	2.535 (64)	1.92 (49)
Pipe Pilot Kit, 3.00" SR (2.00" Plastic Pipe)	30346	30285	30304	30302	2.418 (61)	1.97 (50)
Pipe Pilot Kit, 3.50" PP DF (2.50" Plastic Pipe)	35045	43242	n/a	43244	3.22 (82)	2.17 (55)
Pipe Pilot Kit, 4.00" PP DF (3.00" Plastic Pipe)	40432	43242	n/a	43244	3.575 (91)	2.17 (55)
Pipe Pilot Kit, 4.00" PP DF (4.00" Plastic Pipe)	40296/40414	40285	30304	30302	4.57 (116)	3.605 (92)
Pipe Pilot Kit, 4.00" PP DF (125 mm Plastic Pipe)	40449/40414	40285	30304	30302	4.995 (127)	3.555 (90)
Pipe Pilot Kit, 4.00" SR (3.00" Plastic Pipe)	40258	40285	30304	30302	3.638 (92)	2.17 (55)
Pipe Pilot Kit, 4.00" SR (4.00" Plastic Pipe)	40296	40285	30304	30302	4.57 (116)	3.605 (92)
Pipe Pilot Kit, 4.375" PP DF (3.00" Plastic Pipe)	43240	43242	n/a	43244	3.92 (100)	2.595 (66)
Pipe Pilot Kit, 5.125" PP DF (4.00" Plastic Pipe)	51403	43242	n/a	43244	4.575 (116)	2.855 (73)
Pipe Pilot Kit, 5.125" PP DF (6.00" Plastic Pipe)	51438/51421	40285	n/a	43244	6.705 (170)	4.855 (123)
Pipe Pilot Kit, 5.125" SR (4.00" Plastic Pipe)	51295	51285	n/a	30333	4.609 (117)	2.74 (70)
Pipe Pilot Kit, 5.125" SR (6.00" Plastic Pipe)	51438	51285	n/a	30333	6.705 (170)	4.855 (123)
Pipe Pilot Kit, 5.625" PP DF (125 mm Plastic Pipe)	51439	43242	n/a	43244	4.995 (127)	2.855 (73)
Pipe Pilot Kit, 5.75" SR (4.00" Plastic Pipe)	60299	60235	n/a	30302	5.276 (134)	3.585 (91)

Stick Pipe Pulling Kits

Pulling Accessories

STICK PIPE PULLING KITS



Description	Tool Models in (mm)	Pipe Max. OD in (mm)	Pipe Min. ID in (mm)	Complete Kit Part Number*
Stick Pipe Pulling Kit, 2.50" PP DF (2.00" Plastic Pipe)	2.50 (67) PP DF	2.375 (60)	1.92 (48)	25612
Stick Pipe Pulling Kit, 2.50" SR (1.50" Plastic Pipe)	2.50 (67) SR	2.376 (60)	1.97 (50)	25280
Stick Pipe Pulling Kit, 3.00" PP DF (2.00" Plastic Pipe)	3.00 (75) PP DF	2.535 (64)	1.92 (49)	30708
Stick Pipe Pulling Kit, 3.00" SR (2.00" Plastic Pipe)	3.00 (75) SR	2.418 (61)	1.97 (50)	30303
Stick Pipe Pulling Kit, 3.50" PP DF (2.50" Plastic Pipe)	3.50 (89) PP DF	3.22 (82)	2.17 (55)	35046
Stick Pipe Pulling Kit, 4.00" PP DF (3.00" Pipe)	4.00 (98) PP DF	3.575 (91)	2.17 (55)	40433
Stick Pipe Pulling Kit, 4.00" PP DF (4.00" Plastic Pipe)	4.00 (98) PP DF	4.57 (116)	3.605 (92)	40448
Stick Pipe Pulling Kit, 4.00" PP DF (125 mm Pipe)	4.00 (98) PP DF	4.995 (127)	3.555 (90)	40450
Stick Pipe Pulling Kit, 4.00" SR (3.00" Plastic Pipe)	4.00 (98) SR	3.638 (92)	2.17 (55)	40293
Stick Pipe Pulling Kit, 4.00" SR (4.00" Plastic Pipe)	4.00 (98) SR	4.57 (116)	3.605 (92)	40306
Stick Pipe Pulling Kit, 4.375" PP DF (3.00" Plastic Pipe)	4.375 (111) PP DF	3.92 (100)	2.595 (66)	43241
Stick Pipe Pulling Kit, 5.125" PP DF (4.00" Plastic Pipe)	5.125 (130) PP DF	4.575 (116)	2.855 (73)	51404
Stick Pipe Pulling Kit, 5.125" PP DF (6.00" Plastic Pipe)	5.125 (130) PP DF	6.705 (170)	4.855 (123)	51437
Stick Pipe Pulling Kit, 5.125" SR (4.00" Plastic Pipe)	5.125 (130) SR	4.609 (117)	2.74 (70)	51293
Stick Pipe Pulling Kit, 5.125" SR (6.00" Plastic Pipe)	5.125 (130) SR	6.705 (170)	4.855 (123)	51294
Stick Pipe Pulling Kit, 5.625" PP DF (125 mm Plastic Pipe)	5.625 (130) PP BU DF	4.995 (127)	2.855 (73)	51440
Stick Pipe Pulling Kit, 5.75" SR (4.00" Plastic Pipe)	5.75 (145) SR	5.276 (134)	3.585 (91)	75294

Visit our website at www.hammerheadtrenchless.com.
For ordering or pricing information, contact your local authorized HammerHead dealer.



SPECIALIZED WRENCHES AND SOCKETS

Description	Part Number
Wrench, 2.00" RH Body	21724
Wrench, 2.00" AH Body	21723
Tailcone Socket, 2.00" BL	21721
Crows Foot, 1.75" Wrench, for 21730 Die Puller	21731
Rear Anvil Socket, 2.00" BL	21753
Chain Clamp/Wrench	1026
Rear Anvil Wrench, (3.00–8.00" tools)	30254



21721, Tailcone socket, 2.00" BL



21724, Wrench, 2.00" RH Body

SOCKETS & HEX KEYS

Description	Part Number
3/8", 12-PT, Socket (3.00" SOCKET)	30260
Deep Well Socket, 9mm, Hex	25114
"3/8 Drive, 3/16" Hex Driver, Tailbolts	20260
Hex Driver, 5/32"	20735
3/8, 6 mm, Hex Driver, Socket, 2.50"	25259
Hex Driver, 1/4", for Control Stud	9517
Hex Key, Long, 1/2", for Valve Retainer	40259
Hex Key, 5.125" Tool, for Valve	51259
7/16", Long Arm Hex Key	30259
5/16", Long Arm Hex Key, Valve Retainer	20259



1026, Chain Clamp/Wrench



30254, Rear Anvil Wrench, (3.00–8.00" tools)

HEAD ASSEMBLY TOOLING

Description	Part Number
Service Kit, 2.00–3.00" CAT & AH	30813
Service Kit, 3.50–4.375" CAT	40445
Service Kit, 5.125" CAT	51345
Nose Bolt Socket Assembly, 2.00" RH (SN133449 & down)	21756
Socket, 2.00" Anvil Nut	21762
Socket, Front Anvil Nut, 2.50–3.00" RH Tools	30567

MISCELLANEOUS

Description	Part Number
Lift Strap, Mole (EA)	80288

2.00" (50 mm) AH PP SW BL, PN: 21744

AH – Active Head®, PP – Power Port® Reverse, SW – Sidewalker Series, BL – Boltless



Piercing Tools and Piercing Tool Packages

Description	Part #	Notes
Tool Assembly, 2.00" (50 mm) AH PP SW BL	21744	
Kit, 2.00" (50 mm) AH PP SW BL	21744-1	Includes 50' (15.2 m) Mole Supply Hose, Couplers, Quick Reverse Swivel Kit and Oiler
Kit Int, 2.00" (50 mm) AH PP SW BL	21744-2	

Standard Accessories

Description	Part #	Description	Part #
Kit, Aiming Sight and Stake	40145	Hose, 5/8" X 82' (25 m) w/out couplers	1099
Launching Platform, Standard	30160	Quick Connect (M) X -8 (M) JIC w/ Lock Ring	17241
Shoring Kit Assembly	30170	Single Lock Coupling (M) X 3/4" MNPT w/ Lock Ring	30319
Oiler Assembly, Standard	1150	Assy, Quick Reverse Swivel	1117
Oiler Assembly, Euro	1151	Claw Fitting, Oiler, Claw X 3/4" MNPT (DOM)	1001
Gel Cap, Hose Cover, 2.00" Tools	20797	Claw Fitting, Oiler, Claw X 3/4" MNPT (INTL)	1027
Inline Regulator Assembly	1647	-8 (M) JIC x 3/4" MNPT	914-0102
Hose, 5/8" X 50' (15 m) w/out couplers	1032	Insulated External Whip, 2.00" PP	20799
Hose, 5/8" X 65' (20 m) w/out couplers	1098	Lock Down Head 2.00" AH	20737

Replacement Parts

Striker Ring, 2.00"	20210	Head Replacement Kit, 2.00" AH	20738
Valve Ring Replacement Kit, 2.00" PP	21717	Control Sleeve, 2.00" AH PP BL SW	21739
External Whip, 2.00" PP	20727	Control Stud, 2.00" PP	17215
Body Assembly, 2.00" AH SW	21742	Control Stem 2.00" AH PP BL SW	21737
Striker, 2.00" AH SW	21704	Isolator Half, 2.00" PP BL (2 needed per tool)	21703
Rear Anvil, 2.00" PP BL	21705	Valve Replacement Kit, 2.00" AH PP BL SW	21741
Tail Cone, 2.00" PP BL	21706		

Pulling Accessories

Pulling Carrot, 0.50–1.00" Pipe, 3/8" MNPT	17248	Pneumatic Fitting with Eyebolt, 3/8" FNPT	20794
Shackle, 5/16" Stainless Steel	21754	Quick Link, 1/4"	30333
2.00" PP BL Die puller with extended hose (for 37.5 -40 mm pipe)	21730		

Service Tools

Wrench, 2.00" AH Body	21723	Hex Driver, 5/32"	20735
Tail cone socket, 2.00" BL	21721	Rear Anvil Socket, 2.00" BL	21753
Crows foot, 1.75" Wrench, for 21730 die puller	21731	Service Kit, 2.00–3.00" CAT & AH	30813

2.00" (50 mm) RH SR, PN: 20222

RH – Replaceable Head, SR – Screw Reverse



2.00" (50 mm)

Piercing Tools and Piercing Tool Packages

Description	Part #	Notes
Tool Assembly, 2.00" (50 mm) RH SR	20222	
Kit, 2.00" (50 mm) RH SR	20222-1	Includes 50' (15.2 m) Mole Supply Hose, Couplers, Quick Reverse Swivel Kit and Oiler
Kit Int, 2.00" (50 mm) RH SR	20222-2	

Standard Accessories

Description	Part #	Description	Part #
Kit, Aiming Sight and Stake	40145	Quick Connect (M) X -8 (M) JIC w/ Lock Ring	17241
Launching Platform, Standard	30160	Single Lock Coupling (M) X 3/4" MNPT w/ Lock Ring	30319
Shoring Kit Assembly	30170	Assy, Quick Reverse Swivel	1117
Oiler Assembly, Standard	1150	Claw Fitting, Oiler, Claw X 3/4" MNPT (DOM)	1001
Oiler Assembly, Euro	1151	Claw Fitting, Oiler, Claw X 3/4" MNPT (INTL)	1027
Gel Cap, Hose Cover, 2.00" Tools	20797	-8 (M) JIC x 3/4" MNPT	914-0102
Inline Regulator Assembly	1647	Insulated External Whip, 2.00" SR	20505
Hose, 5/8" X 50' (15 m) w/out couplers	1032	3.00" Expander for 2.00" RH tools	20270
Hose, 5/8" X 65' (20 m) w/out couplers	1098	Stepped Head, 2.00" RH	20795
Hose, 5/8" X 82' (25 m) w/out couplers	1099	Gumbo Head, 2.00" RH	20796

Replacement Parts

Striker Ring, 2.00"	20210	Striker, 2.00" SR	20214
Valve Ring, 2.00" SR	20211	Rear Anvil, 2.00" SR	20205
External Whip, 2.00" SR	17227	Valve Retainer, 2.00" SR	20209
Hose, Internal Valve End, 2.00" SR	20226	Tailcone, 2.00" SR	20206
Tail bolt, 2.00" SR	20221	Valve, 2.00" SR	20208
Wear Face, 2.00" RH	20313	Anvil Nut, 2.00" RH (SN >133449)	21750
Nose Bolt, 2.00" RH (SN <133450)	17207	Quick Connect (F) X 3/8" FNPT	17242
Body Assembly, 2.00" RH SR	20304		

Pulling Accessories

Pulling Carrot, 0.50–1.00" Pipe, 3/8" MNPT	17248	Pneumatic Fitting with Eyebolt, 3/8" FNPT	20794
Shackle, 5/16" Stainless Steel	21754	Quick Link, 1/4"	30333
Pulling Cable w/ Eyenut, 2.00" SR	20285		

Service Tools

Chain Clamp/Wrench	1026	5/16", Long Arm Hex Key, Valve Retainer	20259
Nose Bolt Socket Assy, 2.00" RH (SN133449 & down)	21756	Socket, 2.00" Anvil Nut	21762
3/8" Drive, 3/16" Hex Driver, Tailbolts	20260	Nose Bolt Socket Assembly, 2.00" RH (SN133449 & down)	21756

2.00" (50 mm) RH PP BL, PN: 21733

RH – Replaceable Head, PP – Power Port® Reverse, BL – Boltless



Piercing Tools and Piercing Tool Packages

Description	Part #	Notes
Tool Assembly, 2.00" (50 mm) RH PP BL	21733	
Kit, 2.00" (50 mm) RH PP BL	21733-1	Includes 50' (15.2 m) Mole Supply Hose, Couplers, Quick Reverse Swivel Kit and Oiler
Kit Int, 2.00" (50 mm) RH PP BL	21733-2	

Standard Accessories

Description	Part #	Description	Part #
Kit, Aiming Sight and Stake	40145	Quick Connect (M) X -8 (M) JIC w/ Lock Ring	17241
Launching Platform, Standard	30160	Single Lock Coupling (M) X 3/4" MNPT w/ Lock Ring	30319
Shoring Kit Assembly	30170	Assy, Quick Reverse Swivel	1117
Oiler Assembly, Standard	1150	Claw Fitting, Oiler, Claw X 3/4" MNPT (DOM)	1001
Oiler Assembly, Euro	1151	Claw Fitting, Oiler, Claw X 3/4" MNPT (INTL)	1027
Gel Cap, Hose Cover, 2.00" Tools	20797	-8 (M) JIC x 3/4" MNPT	914-0102
Inline Regulator Assembly	1647	Insulated External Whip, 2.00" PP	20799
Hose, 5/8" X 50' (15 m) w/out couplers	1032	3" Expander for 2" RH tools	20270
Hose, 5/8" X 65' (20 m) w/out couplers	1098	Stepped Head, 2.00" RH	20795
Hose, 5/8" X 82' (25 m) w/out couplers	1099	Gumbo Head, 2.00" RH	20796

Replacement Parts

Striker Ring, 2.00"	20210	Tailcone, 2.00" PP BL	21706
Valve Ring Replacement Kit, 2.00" PP	21717	Valve Replacement Kit, 2.00" PP	21716
External Whip, 2.00" PP	20727	Control Sleeve 2.00" PP	20717
Body Assy, 2.00" RH PP	20604	Control Stud, 2.00" PP	17215
Wear Face, 2.00" RH	20313	Control Stem, 2.00" PP BL	21720
Nose Bolt, 2.00" RH (SN <133450)	17207	Isolator Half, 2.00" PP BL (2 needed per tool)	21703
Striker, 2.00" PP	20704	Anvil Nut, 2.00" RH (SN >133449)	21750
Rear Anvil, 2.00" PP BL	21705		

Pulling Accessories

Pulling Carrot, 0.50–1.00" Pipe, 3/8" MNPT	17248	Pneumatic Fitting with Eyebolt, 3/8" FNPT	20794
Shackle, 5/16" Stainless Steel	21754	Quick Link, 1/4"	30333
2.00" PP BL Die puller with extended hose (for 37.5 -40 mm pipe)	21730		

Service Tools

Wrench, 2.00" RH Body	21724	Socket, 2.00" Anvil Nut	21762
Tailcone Socket, 2.00" BL	21721	Rear Anvil Socket, 2.00" BL	21753
Crows Foot, 1.75" Wrench for 21730 die puller	21731	Nose Bolt Socket Assembly, 2.00" RH (SN133449 & down)	21756
Hex Driver, 5/32", for control stud	20735		

2.00" (50 mm) AH PP BL, PN: 21722

AH – Active Head®, PP – Power Port® Reverse, BL – Boltless



2.00" (50 mm)

Piercing Tools and Piercing Tool Packages

Description	Part #	Notes
Tool Assembly, 2.00" (50 mm) AH PP BL	21722	
Kit, 2.00" (50 mm) AH PP BL	21722-1	Includes 50' (15.2 m) Mole Supply Hose, Couplers, Quick Reverse Swivel Kit and Oiler
Kit Int, 2.00" (50 mm) AH PP BL	21722-2	

Standard Accessories

Description	Part #	Description	Part #
Kit, Aiming Sight and Stake	40145	Quick Connect (M) X -8 (M) JIC w/ Lock Ring	17241
Launching Platform, Standard	30160	Single Lock Coupling (M) X 3/4" MNPT w/ Lock Ring	30319
Shoring Kit Assembly	30170	Assy, Quick Reverse Swivel	1117
Oiler Assembly, Standard	1150	Claw Fitting, Oiler, Claw X 3/4" MNPT (DOM)	1001
Oiler Assembly, Euro	1151	Claw Fitting, Oiler, Claw X 3/4" MNPT (INTL)	1027
Gel Cap, Hose Cover, 2.00" Tools	20797	-8 (M) JIC x 3/4" MNPT	914-0102
Inline Regulator Assembly	1647	Insulated External Whip, 2.00" PP	20799
Hose, 5/8" X 50' (15 m) w/out couplers	1032	Lock Down Head 2.00" AH	20737
Hose, 5/8" X 65' (20 m) w/out couplers	1098	3" Expander for 2" RH tools (must be operated in reverse)	20270
Hose, 5/8" X 82' (25 m) w/out couplers	1099		

Replacement Parts

Striker Ring, 2.00"	20210	Tailcone, 2.00" PP BL	21706
Valve Ring Replacement Kit, 2.00" PP	21717	Head Replacement Kit, 2.00" AH	20738
Valve Replacement Kit, 2.00" PP	21716	Control Sleeve, 2.00" PP	20717
External Whip, 2.00" PP	20727	Control Stud, 2.00" PP	17215
Body Assy, 2.00" AH PP	20726	Control Stem, 2.00" PP BL	21720
Striker, 2.00" PP	20704	Isolator Half, 2.00" PP BL (2 needed per tools)	21703
Rear Anvil, 2.00" PP BL	21705		

Pulling Accessories

Pulling Carrot, 0.50–1.00" Pipe, 3/8" MNPT	17248	Pneumatic Fitting with Eyebolt, 3/8" FNPT	20794
Shackle, 5/16" Stainless Steel	21754	Quick Link, 1/4"	30333
2.00" PP BL Die puller with extended hose (for 37.5 -40 mm pipe)	21730		

Service Tools

Wrench, 2.00" AH Body	21723	Hex Driver, 5/32", for control stud	20735
Tailcone Socket, 2.00" BL	21721	Rear Anvil Socket, 2.00" BL	21753
Crowsfoot, 1.75" Wrench - for 21730 die puller	21731	Service Kit, 2.00–3.00" CAT & AH	30813

2.50" (67 mm) CAT PP DF, PN: 26022

CAT – Catamount, PP – Power Port® Reverse, DF – Debris Free



Piercing Tools and Piercing Tool Packages

Description	Part #	Notes
Tool Assembly, 2.50" (67 mm) CAT PP DF	26022	
Kit, 2.50" (67 mm) CAT PP DF	26022-1	Includes 50' (15.2 m) Mole Supply Hose, Couplers, Quick Reverse Swivel Kit and Oiler
Kit Int, 2.50" (67 mm) CAT PP DF	26022-2	

Standard Accessories

Description	Part #	Description	Part #
Kit, Aiming Sight and Stake	40145	Single Lock Coupling (M) X 3/4" MNPT w/ Lock Ring	30319
Launching Platform, Standard	30160	Assy, Quick Reverse Swivel	1117
Shoring Kit Assembly	30170	Single Lock Coupling, F X F	1009
Oiler Assembly, Standard	1150	Claw Fitting, Oiler, Claw X 3/4" MNPT (DOM)	1001
Oiler Assembly, Euro	1151	Claw Fitting, Oiler, Claw X 3/4" MNPT (INTL)	1027
Gel Cap, Hose Cover, 2.50–4.00" Tools	2029	Insulated External Whip, 2.50–3.00" PP, 3.50–4.00"	40229
Inline Regulator Assembly	1647	Expander, 3.75" (Must be used in reverse)	25270
Hose, 3/4" X 50' (15 m) w/out Couplers	1034	Lock Down Head, 2.50" CAT Tools	26023
Hose, 3/4" X 65' (20 m) w/out Couplers	1109	Pipe Pusher, 2.50–3.00" Tools	25255
Hose, 3/4" X 82' (25 m) w/out Couplers	1128		

Replacement Parts

Replacement Parts	Part #	Contact Dealer or HammerHead Customer Service to replace head assembly.	Part #
Striker Rings, 2.50"	25210	Valve Replacement Kit, 2.50" CAT PP (SN <128539)	26119
External Whip, 2.50–3.00" PP, 3.50–4.00"	40227	Valve Ring Replacement Kit, 2.50" CAT PP	26121
Tailbolt, 2.50" PP, 6 PT, 9 mm Hex	25121	Control Sleeve, 2.50" PP DF	25617
Body Assy, 2.50" CAT	26120	Control Stud, 2.50–3.50" PP	25115
Striker, 2.50" CAT	26104	Control Stem, 2.50" PP DF	25620
Rear Anvil, 2.50" PP DF	25615	Isolator, Half, 2.50" & 3.00" PP DF (2 needed)	30703
Tailcone, 2.50" PP DF	25616	Single Lock Coupling (F) X 3/4" FNPT	40214
Valve Replacement Kit, 2.50" CAT PP (SN >128538)	26139		

Pulling Accessories

Description	Part #	Description	Part #
Pulling Carrot, 0.50–1.00" Pipe, 1/2" MNPT	30445	Pulling Cable Assembly	30285
Pneumatic Fitting with Eyebolt	30293	Clevis Nut	30304
Shackle, 3/8", Stainless Steel	31300	Stick Pipe Pulling Kit, 2.50" PP DF (2.00" Plastic Pipe)	25612
Tap Puller for 2.00" Gas Line w/Extended Whip Hose	25609	Quick Links, 5/32"	30302
Pipe Pilot Kit, 2.50" PP DF (2.00" Plastic Pipe)	25611		

Service Tools

Description	Part #	Description	Part #
Chain Clamp/Wrench	1026	Deep Well Socket, 9mm, Hex	25114
Hex Driver, 5/32", for control stud	20735	Service Kit, 2.00–3.00" AH & CAT	30813

2.50" (67 mm) AH PP DF, PN: 25922

AH – Active Head®, PP – Power Port® Reverse, DF – Debris Free



2.50" (67 mm)

Piercing Tools and Piercing Tool Packages

Description	Part #	Notes
Tool Assembly, 2.50" (67 mm) AH PP DF	25922	
Kit, 2.50" (67 mm) AH PP DF	25922-1	Includes 50' (15.2 m) Mole Supply Hose, Couplers, Quick Reverse Swivel Kit and Oiler
Kit Int, 2.50" (67 mm) AH PP DF	25922-2	

Standard Accessories

Description	Part #	Description	Part #
Kit, Aiming Sight and Stake	40145	Hose, 3/4" X 82' (25 m) w/out Couplers	1128
Launching Platform, Standard	30160	Single Lock Coupling (M) X 3/4" MNPT w/ Lock Ring	30319
Shoring Kit Assembly	30170	Assy, Quick Reverse Swivel	1117
Oiler Assembly, Standard	1150	Single Lock Coupling, F X F	1009
Oiler Assembly, Euro	1151	Claw Fitting, Oiler, Claw X 3/4" MNPT (DOM)	1001
Gel Cap, Hose Cover, 2.50–4.00" Tools	2029	Claw Fitting, Oiler, Claw X 3/4" MNPT (INTL)	1027
Inline Regulator Assembly	1647	Insulated External Whip, 2.50–3.00" PP, 3.50–4.00"	40229
Hose, 3/4" X 50' (15 m) w/out Couplers	1034	Expander, 3.75" (Must be used in reverse)	25270
Hose, 3/4" X 65' (20 m) w/out Couplers	1109	Lock Down Head, 2.50" AH Tools	25178

Replacement Parts

Striker Rings, 2.50"	25210	Ring, Head Seal - 2.50" AH	25143
External Whip, 2.50–3.00" PP, 3.50–4.00"	40227	Valve Replacement Kit, 2.50" RH PP & AH PP	25007
Tailbolt, 2.50" PP, 6 PT, 9 mm, Hex	25121	Valve Ring Replacement Kit, 2.50" RH PP & AH PP	25009
Body Assy, 2.50" AH PP	25146	Control Sleeve, 2.50" PP DF	25617
Striker, 2.50" AH PP & RH PP	25148	Control Stud, 2.50–3.50" PP	25115
Rear Anvil, 2.50" PP DF	25615	Control Stem, 2.50" PP DF	25620
Tailcone, 2.50" PP DF	25616	Isolator Half, 2.50" & 3.00" PP DF (2 needed)	30703
Head Replacement Kit, 2.50" AH	25177	Single Lock Coupling (F) X 3/4" FNPT	40214
Ring, Bit Shaft, 2.50" AH	25144		

Pulling Accessories

Pulling Carrot, 0.50–1.00" Pipe, 1/2" MNPT	30445	Pulling Cable Assembly	30285
Pneumatic Fitting with Eyebolt	30293	Clevis Nut	30304
Shackle, 3/8", Stainless Steel	31300	Stick Pipe Pulling Kit, 2.50" PP DF (2.00" Plastic Pipe)	25612
Tap Puller for 2.00" Gas Line w/Extended Whip Hose	25609	Quick Links, 5/32"	30302
Pipe Pilot Kit, 2.50" PP DF (2.00" Plastic Pipe)	25611		

Service Tools

Chain Clamp/Wrench	1026	Deep Well Socket, 9mm, Hex	25114
Hex Driver, 5/32", for control stud	20735	Service Kit, 2.00–3.00" AH & CAT	30813

2.50" (67 mm) RH PP DF, PN: 25522



RH – Replaceable Head, PP – Power Port® Reverse, DF – Debris Free



Piercing Tools and Piercing Tool Packages

Description	Part #	Notes
Tool Assembly, 2.50" (67 mm) RH PP DF	25522	
Tool Assembly, 2.50" (67 mm) RH PP DF MT	26322	Moletrac® Piercing Tool includes housing, beacon cap and beacon sleeve
Kit, 2.50" (67 mm) RH PP DF	25522-1	Includes 50' (15.2 m) Mole Supply Hose, Couplers, Quick Reverse Swivel Kit and Oiler
Kit Int, 2.50" (67 mm) RH PP DF	25522-2	
Kit, 2.50" (67 mm) RH PP DF MT	26322-1	Includes housing, beacon cap, beacon sleeve, 50' (15.2 m) Mole Supply Hose, Couplers, Quick Reverse Swivel Kit and Oiler (does not include beacon or locator)
Kit Int, 2.50" (67 mm) RH PP DF MT	26322-2	

Standard Accessories

Description	Part #	Description	Part #
Kit, Aiming Sight and Stake	40145	Single Lock Coupling (M) X 3/4" MNPT w/ Lock Ring	30319
Launching Platform, Standard	30160	Assy, Quick Reverse Swivel	1117
Shoring Kit Assembly	30170	Single Lock Coupling, F X F	1009
Oiler Assembly, Standard	1150	Claw Fitting, Oiler, Claw X 3/4" MNPT (DOM)	1001
Oiler Assembly, Euro	1151	Claw Fitting, Oiler, Claw X 3/4" MNPT (INTL)	1027
Gel Cap, Hose Cover, 2.50–4.00" Tools	2029	Insulated External Whip, 2.50–3.00" PP, 3.50–4.00"	40229
Inline Regulator Assembly	1647	Expander, 3.75"	25270
Hose, 3/4" X 50' (15 m) w/out Couplers	1034	Stepped Head, 2.50" RH Tools	25256
Hose, 3/4" X 65' (20 m) w/out Couplers	1109	Gumbo Head, 2.50" RH Tools	25257
Hose, 3/4" X 82' (25 m) w/out Couplers	1128	Pipe Pusher, 2.50–3.00" Tools	25255

Replacement Parts

Striker Rings, 2.50"	25210	Tailcone, 2.50" PP DF	25616
External Whip, 2.50–3.00" PP, 3.50–4.00"	40227	Valve Replacement Kit 2.50" RH PP & AH PP	25007
Tailbolt, 2.50" PP, 6 PT, 9 mm, Hex	25121	Valve Ring Replacement Kit 2.50" RH PP & AH PP	25009
Body Assy, 2.50" RH PP	25319	Control Sleeve, 2.50" PP DF	25617
Wear Face, 2.50" RH	25323	Control Stud, 2.50" - 3.50" PP	25115
Anvil Nut, 2.50" RH	30606	Control Stem, 2.50" PP DF	25620
Striker, 2.50" AH PP & RH PP	25148	Isolator Half, 2.50" & 3.00" PP DF (2 needed)	30703
Rear Anvil, 2.50" PP DF	25615	Single Lock Coupling (F) X 3/4" FNPT	40214

Moletrac® Accessories

Beacon Housing Kit, 2.50" & 3.00" RH Tools (Incl housing, beacon cap assy and beacon sleeve)	30732	Beacon Cap Assy 2.50–4.00" RH	30731
BI Beacon 2.50–4.00" RH Tools (AccuView Cam Receiver)	30737	Beacon Sleeve	30730
AccuView® Cam Receiver for 2.50–4.00" RH Tools	912-5669		

Pulling Accessories

Pulling Carrot, 0.50–1.00" Pipe, 1/2" MNPT	30445	Pipe Pilot Kit, 2.50" PP DF (2.00" Plastic Pipe)	25611
Pneumatic Fitting with Eyebolt	30293	Pulling Cable Assembly	30285
Quick Links, 5/32"	30302	Clevis Nut	30304
Shackle, 3/8", Stainless Steel	31300	Stick Pipe Pulling Kit, 2.50" PP DF (2.00" Plastic Pipe)	25612
Tap Puller for 2.00" Gas Line w/Extended Whip Hose	25609		

Service Tools

Chain Clamp/Wrench	1026	Deep Well Socket, 9 mm, Hex	25114
Hex Driver, 5/32", for control stud	20735	Socket, Front Anvil Nut	30567


Piercing Tools and Piercing Tool Packages

Description	Part #	Notes
Tool Assembly, 2.50" (67 mm) RH SR	25222	
Tool Assembly, 2.50" (67 mm) RH SR MT	26222	Moletrac® Piercing Tool includes housing, beacon cap and beacon sleeve
Kit, 2.50" (67 mm) RH SR	25222-1	Includes 50' (15.2 m) Mole Supply Hose, Couplers, Quick Reverse Swivel Kit and Oiler
Kit Int, 2.50" (67 mm) RH SR	25222-2	
Kit, 2.50" (67 mm) RH SR MT	26222-1	Includes housing, beacon cap, beacon sleeve, 50' (15.2 m) Mole Supply Hose, Couplers, Quick Reverse Swivel Kit and Oiler (does not include beacon or locator)
Kit Int, 2.50" (67 mm) RH SR MT	26222-2	

Standard Accessories

Description	Part #	Description	Part #
Kit, Aiming Sight and Stake	40145	Single Lock Coupling (M) X 3/4" MNPT w/ Lock Ring	30319
Launching Platform, Standard	30160	Assy, Quick Reverse Swivel	1117
Shoring Kit Assembly	30170	Single Lock Coupling, F X F	1009
Oiler Assembly, Standard	1150	Claw Fitting, Oiler, Claw X 3/4" MNPT (DOM)	1001
Oiler Assembly, Euro	1151	Claw Fitting, Oiler, Claw X 3/4" MNPT (INTL)	1027
Gel Cap, Hose Cover, 2.50–4.00" Tools	2029	Insulated External Whip, 2.50–3.00" PP, 3.50–4.00"	30327
Inline Regulator Assembly	1647	Expander, 3.75"	25270
Hose, 3/4" X 50' (15 m) w/out Couplers	1034	Stepped Head, 2.50" RH Tools	25256
Hose, 3/4" X 65' (20 m) w/out Couplers	1109	Gumbo Head, 2.50" RH Tools	25257
Hose, 3/4" X 82' (25 m) w/out Couplers	1128	Pipe Pusher, 2.50–3.00" Tools	25255

Replacement Parts

Striker Rings, 2.50"	25210	Body Assy, 2.50" RH SR	25319
Valve Ring, 2.50" SR	25211	Striker, 2.50" SR	25214
External Whip, 2.50–3.00" SR	30227	Rear Anvil, 2.50" SR	25205
Hose, Internal, Valve End 2.50" SR	25226	Valve Retainer, 2.50" SR	25209
Tailbolt, 2.50" SR	25221	Tailcone, 2.50" SR	25206
Wear Face, 2.50" RH	25323	Valve, 2.50" SR	25208
Anvil Nut, 2.50" RH	30606	Single Lock Coupling (F) X 3/4" FNPT	30214

Moletrac® Accessories

Beacon Housing Kit, 2.50" & 3.00" RH Tools (Incl housing, beacon cap assy and beacon sleeve)	30732	Beacon Cap Assy 2.50–4.00" RH	30731
BI Beacon 2.50–4.00" RH Tools (AccuView Cam Receiver)	30737	Beacon Sleeve	30730
AccuView® Cam Receiver for 2.50–4.00" RH Tools	912-5669		

Pulling Accessories

Pulling Carrot, 0.50–1.00" Pipe, 1/2" MNPT	30445	Hose, External 3.00" (Long)	30228
Pneumatic Fitting with Eyebolt	30293	Pipe Pilot Kit, 2.50" SR (2.00" Plastic Pipe)	25281
Quick Links, 5/32"	30302	Pulling Cable Assembly	25284
Shackle, 3/8", Stainless Steel	31300	Clevis Nut	30304
Tap Puller, 2.00" Gas, 2.50" Tool (Note: Requires Long External Hose, PN: 30228)	25265	Stick Pipe Pulling Kit, 2.50" SR (2.00" Plastic Pipe)	25280

Service Tools

Chain Clamp/Wrench	1026	3/8, 6 mm, Hex Driver, Socket, 2.50"	25259
7/16 Long Arm Hex Key	30259	Socket, Front Anvil Nut	30567

2.50" (67 mm) RH PP SW DF, PN: 26622



RH – Replaceable Head, PP – Power Port® Reverse, SW – Sidewalker, DF – Debris Free



Piercing Tools and Piercing Tool Packages

Description	Part #	Notes
Tool Assembly, 2.50" (67 mm) RH PP SW DF	26622	
Tool Assembly, 2.50" (67 mm) RH PP DF SW MT	26722	Moletrac® Piercing Tool includes housing, beacon cap and beacon sleeve
Kit, 2.50" (67 mm) RH PP SW DF	26622-1	Includes 50' (15.2 m) Mole Supply Hose, Couplers, Quick Reverse Swivel Kit and Oiler
Kit Int, 2.50" (67 mm) RH PP SW DF	26622-2	
Kit, 2.50" (67 mm) RH PP DF SW MT	26722-1	Includes housing, beacon cap, beacon sleeve, 50' (15.2 m) Mole Supply Hose, Couplers, Quick Reverse Swivel Kit and Oiler (does not include beacon or locator)
Kit Int, 2.50" (67 mm) RH PP DF SW MT	26722-2	

Standard Accessories

Description	Part #	Description	Part #
Kit, Aiming Sight and Stake	40145	Single Lock Coupling (M) X 3/4" MNPT w/ Lock Ring	30319
Launching Platform, Standard	30160	Assy, Quick Reverse Swivel	1117
Shoring Kit Assembly	30170	Single Lock Coupling, F X F	1009
Oiler Assembly, Standard	1150	Claw Fitting, Oiler, Claw X 3/4" MNPT (DOM)	1001
Oiler Assembly, Euro	1151	Claw Fitting, Oiler, Claw X 3/4" MNPT (INTL)	1027
Gel Cap, Hose Cover, 2.50–4.00" Tools	2029	Insulated External Whip, 2.50–3.00" PP, 3.50–4.00"	40229
Inline Regulator Assembly	1647	Expander, 3.75"	25270
Hose, 3/4" X 50' (15 m) w/out Couplers	1034	Stepped Head, 2.50" RH Tools	25256
Hose, 3/4" X 65' (20 m) w/out Couplers	1109	Gumbo Head, 2.50" RH Tools	25257
Hose, 3/4" X 82' (25 m) w/out Couplers	1128	Pipe Pusher, 2.50–3.00" Tools	25255

Replacement Parts

Striker Rings, 2.50"	25210	Tailcone, 2.50" PP DF	25616
External Whip, 2.50–3.00" PP, 3.50–4.00"	40227	Valve Replacement Kit 2.50" PP SW	26613
Tailbolt, 2.50" PP, 6 PT, 9 mm, Hex	25121	Valve Ring Replacement Kit 2.50" PP SW	25009
Body Assy, 2.50" RH PP SW	26600	Control Sleeve, 2.50" PP DF	26604
Wear Face, 2.50" RH	25323	Control Stud, 2.50–3.50" PP	25115
Anvil Nut, 2.50" RH	30606	Control Stem, 2.50" PP DF	26620
Striker, 2.50" RH PP SW	25614	Isolator Half, 2.50" & 3.00" PP DF (2 needed)	30703
Rear Anvil, 2.50" PP DF	26615	Single Lock Coupling (F) X 3/4" FNPT	40214

Moletrac® Accessories

Beacon Housing Kit, 2.50" & 3.00" RH Tools (Incl housing, beacon cap assy and beacon sleeve)	30732	Beacon Cap Assy 2.50–4.00" RH	30731
BI Beacon 2.50–4.00" RH Tools (AccuView Cam Receiver)	30737	Beacon Sleeve	30730
AccuView® Cam Receiver for 2.50–4.00" RH Tools	912-5669		

Pulling Accessories

Pulling Carrot, 0.50–1.00" Pipe, 1/2" MNPT	30445	Pipe Pilot, 2.50" PP DF (2.00" Plastic Pipe)	25611
Pneumatic Fitting with Eyebolt	30293	Pulling Cable Assembly	30285
Quick Links, 5/32"	30302	Clevis Nut	30304
Shackle, 3/8", Stainless Steel	31300	Stick Pipe Pulling Kit, 2.50" PP DF (2.00" Plastic Pipe)	25612
Tap Puller for 2.00" Gas Line w/Extended Whip Hose	25609		

Service Tools

Chain Clamp/Wrench	1026	Deep Well Socket, 9mm, Hex	25114
Hex Driver, 5/32", for control stud	20735	Socket, Front Anvil Nut	30567



3.00" (75 mm) CAT PP DF, PN: 30822

CAT – Catamount, PP – Power Port® Reverse, DF – Debris Free



Piercing Tools and Piercing Tool Packages

Description	Part #	Notes
Tool Assembly, 3.00" (75 mm) CAT PP DF	30822	
Kit, 3.00" (75 mm) CAT PP DF	30822-1	Includes 50' (15.2 m) Mole Supply Hose, Couplers, Quick Reverse Swivel Kit and Oiler
Kit Int, 3.00" (75 mm) CAT PP DF	30822-2	

Standard Accessories

Description	Part #	Description	Part #
Kit, Aiming Sight and Stake	40145	Hose, 3/4" X 82' (25 m) w/out Couplers	1128
Launching Platform, Standard	30160	Single Lock Coupling (M) X 3/4" MNPT w/ Lock Ring	30319
Shoring Kit Assembly	30170	Assy, Quick Reverse Swivel	1117
Oiler Assembly, Standard	1150	Single Lock Coupling, F X F	1009
Oiler Assembly, Euro	1151	Claw Fitting, Oiler, Claw X 3/4" MNPT (DOM)	1001
Gel Cap, Hose Cover, 2.50–4.00" Tools	2029	Claw Fitting, Oiler, Claw X 3/4" MNPT (INTL)	1027
Inline Regulator Assembly	1647	Insulated External Whip, 2.50–3.00" PP, 3.50–4.00"	40229
Hose, 3/4" X 50' (15 m) w/out Couplers	1034	Lock Down Head, 3.00" CATJN Tools	30817
Hose, 3/4" X 65' (20 m) w/out Couplers	1109	Lock Down Head, 3.00" CAT Tools	30937

Replacement Parts

Contact Dealer or HammerHead Customer Service to replace head assembly.

Striker Rings, 3.00"	30210	Valve Replacement Kit, 3.00" CAT PP	30919
Valve Ring Replacement Kit, 3.00" CAT PP	30921	Control Sleeve, 3.00" PP DF	30717
Tailbolt, 3.00–5.75"	30221	Control Stud, 2.50–3.50" PP	25115
Body Assy, 3.00" CAT JN	30808	Control Stem, 3.00" PP DF	30720
Striker, 3.00" CAT	30904	Isolator, Half, 2.50" & 3.00" PP DF (2 needed)	30703
Rear Anvil, 3.00" PP DF	30715	External Whip, 2.50–3.00" PP, 3.50–4.00" ALL	40227
Tailcone, 3.00" PP DF	30716	Single Lock Coupling (F) X 3/4" FNPT	40214

Pulling Accessories

Pulling Carrot, 0.50–1.00" Pipe, 1/2" MNPT	30445	Pipe Pilot Kit, 3.00" PP DF (2.00" Plastic Pipe)	30710
Pneumatic Fitting with Eyebolt	30293	Pulling Cable Assembly	30285
Quick Links, 5/32"	30302	Clevis Nut	30304
Shackle, 3/8", Stainless Steel	31300	Stick Pipe Pulling Kit, 3.00" PP DF, (2.00" Plastic Pipe)	30708
Tap Puller, 2.00" PE Pipe w/ Extended Whip Hose	30706		

Service Tools

Chain Clamp/Wrench	1026	3/8", 12-PT, Socket	30260
Rear Anvil Wrench, (3.00–8.00" tools)	30254	Service Kit, 2.00–3.00" CAT & AH	30813
Hex Driver, 5/32", for control stud	20735		

3.00" (75 mm) AH PP DF, PN: 31022

AH – Active Head®, PP – Power Port® Reverse, DF – Debris Free



3.00" (75 mm)

Piercing Tools and Piercing Tool Packages

Description	Part #	Notes
Tool Assembly, 3.00" (75 mm) AH PP DF	31022	
Kit, 3.00" (75 mm) AH PP DF	31022 -1	Includes 50' (15.2 m) Mole Supply Hose, Couplers, Quick Reverse Swivel Kit and Oiler
Kit Int, 3.00" (75 mm) AH PP DF	31022 -2	

Standard Accessories

Description	Part #	Description	Part #
Kit, Aiming Sight and Stake	40145	Hose, 3/4" X 82' (25 m) w/out Couplers	1128
Launching Platform, Standard	30160	Single Lock Coupling (M) X 3/4" MNPT w/ Lock Ring	30319
Shoring Kit Assembly	30170	Assy, Quick Reverse Swivel	1117
Oiler Assembly, Standard	1150	Single Lock Coupling, F X F	1009
Oiler Assembly, Euro	1151	Claw Fitting, Oiler, Claw X 3/4" MNPT (DOM)	1001
Gel Cap, Hose Cover, 2.50–4.00" Tools	2029	Claw Fitting, Oiler, Claw X 3/4" MNPT (INTL)	1027
Inline Regulator Assembly	1647	Insulated External Whip, 2.50–3.00" PP, 3.50–4.00"	40229
Hose, 3/4" X 50' (15 m) w/out Couplers	1034	Lock Down Head, 3.00" AH Tools	30538
Hose, 3/4" X 65' (20 m) w/out Couplers	1109		

Replacement Parts

Striker Rings, 3.00"	30210	Ring, Bit Shaft, 3.00" AH	30510
Valve Ring Replacement Kit, 3.00" AH PP & RH PP	31007	Ring, Head Seal, 3.00" AH	30511
External Whip, 2.50–3.00" PP, 3.50–4.00" ALL	40227	Valve Replacement Kit 3.00" AH PP & RH PP	31009
Tailbolt, 3.00–5.75"	30221	Control Sleeve, 3.00" PP DF	30717
Body Assy, 3.00" AH PP	30513	Control Stud, 2.50–3.50" PP	25115
Striker, 3.00" AH PP & RH PP	30521	Control Stem, 3.00" PP DF	30720
Rear Anvil, 3.00" PP DF	30715	Isolator Half, 2.50" & 3.00" PP DF (2 needed)	30703
Tailcone, 3.00" PP DF	30716	Single Lock Coupling (F) X 3/4" FNPT	40214
Head Replacement Kit, 3.00" AH	30537		

Pulling Accessories

Pulling Carrot, 0.50–1.00" Pipe, 1/2" MNPT	30445	Pipe Pilot Kit, 3.00" PP DF (2.00" Plastic Pipe)	30710
Pneumatic Fitting with Eyebolt	30293	Pulling Cable Assembly	30285
Quick Links, 5/32"	30302	Clevis Nut	30304
Shackle, 3/8", Stainless Steel	31300	Stick Pipe Pulling Kit, 3.00" PP DF, (2.00" Plastic Pipe)	30708
Tap Puller, 2.00" PE Pipe w/ Extended Whip Hose	30706		

Service Tools

Chain Clamp/Wrench	1026	3/8", 12-PT, Socket	30260
Rear Anvil Wrench, (3.00–8.00" tools)	30254	Service Kit, 2.00–3.00" CAT & AH	30813
Hex Driver, 5/32", for control stud	20735		

3.00" (75 mm) RH PP DF, PN: 31222



RH – Replaceable Head, PP – Power Port® Reverse, DF – Debris Free



Piercing Tools and Piercing Tool Packages

Description	Part #	Notes
Tool Assembly, 3.00" (75 mm) RH PP DF	31222	
Tool Assembly, 3.00" (75 mm) RH PP DF MT	31422	Moletrac® Piercing Tool includes housing, beacon cap and beacon sleeve
Kit, 3.00" (75 mm) RH PP DF	31222-1	Includes 50' (15.2 m) Mole Supply Hose, Couplers, Quick Reverse Swivel Kit and Oiler
Kit Int, 3.00" (75 mm) RH PP DF	31222-2	
Kit, 3.00" (75 mm) RH PP DF MT	31422-1	Includes housing, beacon cap, beacon sleeve, 50' (15.2 m) Mole Supply Hose, Couplers, Quick Reverse Swivel Kit and Oiler (does not include beacon or locator)
Kit Int, 3.00" (75 mm) RH PP DF MT	31422-2	

Standard Accessories

Description	Part #	Description	Part #
Kit, Aiming Sight and Stake	40145	Single Lock Coupling (M) X 3/4" MNPT w/ Lock Ring	30319
Launching Platform, Standard	30160	Assy, Quick Reverse Swivel	1117
Shoring Kit Assembly	30170	Single Lock Coupling, F X F	1009
Oiler Assembly, Standard	1150	Claw Fitting, Oiler, Claw X 3/4" MNPT (DOM)	1001
Oiler Assembly, Euro	1151	Claw Fitting, Oiler, Claw X 3/4" MNPT (INTL)	1027
Gel Cap, Hose Cover, 2.50–4.00" Tools	2029	Insulated External Whip, 2.50–3.00" PP, 3.50–4.00"	40229
Inline Regulator Assembly	1647	Expander, 4.00"	30270
Hose, 3/4" X 50' (15 m) w/out Couplers	1034	Stepped Head, 3.00" RH Tools	30623
Hose, 3/4" X 65' (20 m) w/out Couplers	1109	Gumbo Head, 3.00" RH Tools	30624
Hose, 3/4" X 82' (25 m) w/out Couplers	1128	Pipe Pusher, 2.50–3.00" Tools	25255

Replacement Parts

Striker Rings, 3.00"	30210	Striker, 3.00" AH PP & RH PP	30521
Valve Replacement Kit 3.0" AH PP & RH PP	31009	Rear Anvil, 3.00" PP DF	30715
Valve Ring Replacement Kit, 3.00" AH PP & RH PP	31007	Tailcone, 3.00" PP DF	30716
External Whip, 2.50–3.00" PP, 3.50–4.00" ALL	40227	Control Sleeve, 3.00" PP DF	30717
Tailbolt, 3.00–5.75"	30221	Control Stud, 2.50–3.50" PP	25115
Body Assy, 3.00" RH PP	30704	Control Stem, 3.0" PP DF	30720
Wearface, 3.00" RH	30607	Isolator Half, 2.50" & 3.00" PP DF (2 needed)	30703
Anvil Nut, 3.00" RH	30606	Single Lock Coupling (F) X 3/4" FNPT	40214

Moletrac® Accessories

Beacon Housing Kit, 2.50" & 3.00" RH Tools (Incl housing, beacon cap assy and beacon sleeve)	30732	Beacon Cap Assy 2.50–4.00" RH	30731
BI Beacon 2.50–4.00" RH Tools (AccuView Cam Receiver)	30737	Beacon Sleeve	30730
AccuView® Cam Receiver for 2.50–4.00" RH Tools	912-5669		

Pulling Accessories

Pulling Carrot, 0.50–1.00" Pipe, 1/2" MNPT	30445	Pipe Pilot Kit, 3.00" PP DF (2.00" Plastic Pipe)	30710
Pneumatic Fitting with Eyebolt	30293	Pulling Cable Assembly	30285
Quick Links, 5/32"	30302	Clevis Nut	30304
Shackle, 3/8", Stainless Steel	31300	Stick Pipe Pulling Kit, 3.00" PP DF, (2.00" Plastic Pipe)	30708
Tap Puller, 2.00" PE Pipe w/ Extended Whip Hose	30706		

Service Tools

Chain Clamp/Wrench	1026	3/8", 12-PT, Socket	30260
Rear Anvil Wrench, (3.00–8.00" tools)	30254	Socket, Anvil Nut	30567
Hex Driver, 5/32", for control stud	20735		


Piercing Tools and Piercing Tool Packages

Description	Part #	Notes
Tool Assembly, 3.00" (75 mm) RH SR	30222	
Tool Assembly, 3.00" (75 mm) RH SR MT	30322	Moletrac® Piercing Tool includes housing, beacon cap and beacon sleeve
Kit, 3.00" (75 mm) RH SR	30222-1	Includes 50' (15.2 m) Mole Supply Hose, Couplers, Quick Reverse Swivel Kit and Oiler
Kit Int, 3.00" (75 mm) RH SR	30222-2	
Kit, 3.00" (75 mm) RH SR MT	30322-1	Includes housing, beacon cap, beacon sleeve, 50' (15.2 m) Mole Supply Hose, Couplers, Quick Reverse Swivel Kit and Oiler (does not include beacon or locator)
Kit Int, 3.00" (75 mm) RH SR MT	30322-2	

Standard Accessories

Description	Part #	Description	Part #
Kit, Aiming Sight and Stake	40145	Single Lock Coupling (M) X 3/4" MNPT w/ Lock Ring	30319
Launching Platform, Standard	30160	Assy, Quick Reverse Swivel	1117
Shoring Kit Assembly	30170	Single Lock Coupling, F X F	1009
Oiler Assembly, Standard	1150	Claw Fitting, Oiler, Claw X 3/4" MNPT (DOM)	1001
Oiler Assembly, Euro	1151	Claw Fitting, Oiler, Claw X 3/4" MNPT (INTL)	1027
Gel Cap, Hose Cover, 2.50–4.00" Tools	2029	Insulated External Whip, 2.50–3.00" SR	30327
Inline Regulator Assembly	1647	Expander, 4.00"	30270
Hose, 3/4" X 50' (15 m) w/out Couplers	1034	Stepped Head, 3.00" RH Tools	30623
Hose, 3/4" X 65' (20 m) w/out Couplers	1109	Gumbo Head, 3.00" RH Tools	30624
Hose, 3/4" X 82' (25 m) w/out Couplers	1128	Pipe Pusher, 2.50–3.00" Tools	25255

Replacement Parts

Striker Rings, 3.00"	30210	Body Assy, 3.00" RH SR	30604
Valve Ring, 3.00" SR	30211	Striker, 3.00" SR	31204
External Whip, 2.50–3.00" SR	30227	Rear Anvil, 3.00" SR	30205
Hose International, Valve End, 3.00" SR	30226	Valve Retainer, 3.00" SR	31209
Tailbolt, 3.00–5.75"	30221	Tailcone, 3.00" SR	30206
Wearface, 3.00" RH	30607	Valve, 3.00" SR	31208
Anvil Nut, 3.00" RH	30606	Single Lock Coupling (F) X 3/4" FNPT	30214

Moletrac® Accessories

Beacon Housing Kit, 2.50" & 3.00" RH Tools (Incl housing, beacon cap assy and beacon sleeve)	30732	Beacon Cap Assy 2.50–4.00" RH	30731
BI Beacon 2.50–4.00" RH Tools (AccuView Cam Receiver)	30737	Beacon Sleeve	30730
AccuView® Cam Receiver for 2.50–4.00" RH Tools	912-5669		

Pulling Accessories

Pulling Carrot, 0.50–1.00" Pipe, 1/2" MNPT	30445	Pipe Pilot Kit, 3.00" SR (2.00" Plastic Pipe)	30346
Pneumatic Fitting with Eyebolt	30293	Pulling Cable Assembly	30285
Quick Links, 5/32"	30302	Clevis Nut	30304
Shackle, 3/8", Stainless Steel	31300	Stick Pipe Pulling Kit, 3.00" SR (2.00" Plastic Pipe)	30303
Tap Puller Kit, 2.00", 3.00" SR Tools	30446		

Service Tools

Chain Clamp/Wrench	1026	3/8", 12-PT, Socket	30260
Rear Anvil Wrench, (3.00–8.00" tools)	30254	Socket, Anvil Nut	30567
Hex Key, Long Arm, 7/16"	30259		

3.00" (75 mm) RH PP SW DF, PN: 31622



RH – Replaceable Head, PP – Power Port® Reverse, SW – Sidewalker, DF – Debris Free



Piercing Tools and Piercing Tool Packages

Description	Part #	Notes
Tool Assembly, 3.00" (75 mm) RH PP SW DF	31622	
Tool Assembly, 3.00" (75 mm) RH PP SW DF MT	31722	Moletrac® Piercing Tool includes housing, beacon cap and beacon sleeve
Kit, 3.00" (75 mm) RH PP SW DF	31622-1	Includes 50' (15.2 m) Mole Supply Hose, Couplers, Quick Reverse Swivel Kit and Oiler
Kit Int, 3.00" (75 mm) RH PP SW DF	31622-2	
Kit, 3.00" (75 mm) RH PP DF SW MT	31722-1	Includes housing, beacon cap, beacon sleeve, 50' (15.2 m) Mole Supply Hose, Couplers, Quick Reverse Swivel Kit and Oiler (does not include beacon or locator)
Kit Int, 3.00" (75 mm) RH PP SW DF MT	31722-2	

Standard Accessories

Description	Part #	Description	Part #
Kit, Aiming Sight and Stake	40145	Single Lock Coupling (M) X 3/4" MNPT w/ Lock Ring	30319
Launching Platform, Standard	30160	Assy, Quick Reverse Swivel	1117
Shoring Kit Assembly	30170	Single Lock Coupling, F X F	1009
Oiler Assembly, Standard	1150	Claw Fitting, Oiler, Claw X 3/4" MNPT (DOM)	1001
Oiler Assembly, Euro	1151	Claw Fitting, Oiler, Claw X 3/4" MNPT (INTL)	1027
Gel Cap, Hose Cover, 2.50–4.00" Tools	2029	Insulated External Whip, 2.50–3.00" PP, 3.50–4.00"	40229
Inline Regulator Assembly	1647	Expander, 4.00"	30270
Hose, 3/4" X 50' (15 m) w/out Couplers	1034	Stepped Head, 3.00" RH Tools	30623
Hose, 3/4" X 65' (20 m) w/out Couplers	1109	Gumbo Head, 3.00" RH Tools	30624
Hose, 3/4" X 82' (25 m) w/out Couplers	1128	Pipe Pusher, 2.50–3.00" Tools	25255

Replacement Parts

Striker Rings, 3.00"	30210	Striker, 3.00" PP SW DF	31614
Valve Replacement Kit 3.00" PP SW	31613	Rear Anvil, 3.00" PP SW DF	31615
Valve Ring Replacement Kit, 3.00" PP SW	30921	Tailcone, 3.00" PP DF	30716
External Whip, 2.50–3.00" PP, 3.50–4.00" ALL	40227	Control Sleeve, 3.00" PP SW DF	31609
Tailbolt, 3.00–5.75"	30221	Control Stud, 2.50–3.50" PP	25115
Body Assy, 3.00" PP SW	31600	Control Stem, 3.00" PP SW DF	31620
Wearface, 3.00" RH	30607	Isolator Half, 2.50" & 3.00" PP DF (2 needed)	30703
Anvil Nut, 3.00" RH	30606	Single Lock Coupling (F) X 3/4" FNPT	40214

Moletrac® Accessories

Beacon Housing Kit, 2.50" & 3.00" RH Tools (Incl housing, beacon cap assy and beacon sleeve)	30732	Beacon Cap Assy 2.50–4.00" RH	30731
BI Beacon 2.50–4.00" RH Tools (AccuView Cam Receiver)	30737	Beacon Sleeve	30730
AccuView® Cam Receiver for 2.50–4.00" RH Tools	912-5669		

Pulling Accessories

Pulling Carrot, 0.50–1.00" Pipe, 1/2" MNPT	30445	Pipe Pilot Kit, 3.00" PP DF (2.00" Plastic Pipe)	30710
Pneumatic Fitting with Eyebolt	30293	Pulling Cable Assembly	30285
Quick Links, 5/32"	30302	Clevis Nut	30304
Shackle, 3/8", Stainless Steel	31300	Stick Pipe Pulling Kit, 3.00" PP DF, (2.00" Plastic Pipe)	30708
Tap Puller, 2.00" PE Pipe w/ Extended Whip Hose	30706		

Service Tools

Chain Clamp/Wrench	1026	3/8", 12-PT, Socket	30260
Rear Anvil Wrench, (3.00–8.00" tools)	30254	Socket, Anvil Nut	30567
Hex Driver, 5/32", for control stud	20735		

3.50" (89 mm) CAT PP DF, PN: 35122

CAT – Catamount, PP – Power Port® Reverse, DF – Debris Free



3.50" (89 mm)

Piercing Tools and Piercing Tool Packages		
Description	Part #	Notes
Tool Assembly, 3.50" (89 mm) CAT PP DF	35122	
Kit, 3.50" (89 mm) CAT PP DF	35122-1	Includes 50' (15.2 m) Mole Supply Hose, Couplers, Quick Reverse Swivel Kit and Oiler
Kit Int, 3.50" (89 mm) CAT PP DF	35122-2	

Standard Accessories			
Description	Part #	Description	Part #
Kit, Aiming Sight and Stake	40145	Hose, 3/4" X 82' (25 m) w/out Couplers	1128
Launching Platform Kit, 3.50" tools and larger	925-0001	Single Lock Coupling (M) X 3/4" MNPT w/ Lock Ring	30319
Oiler Assembly, Standard	1150	Assy, Quick Reverse Swivel	1117
Oiler Assembly, Euro	1151	Single Lock Coupling, F X F	1009
Gel Cap, Hose Cover, 2.50–4.00" Tools	2029	Claw Fitting, Oiler, Claw X 3/4" MNPT (DOM)	1001
Inline Regulator Assembly	1647	Claw Fitting, Oiler, Claw X 3/4" MNPT (INTL)	1027
Hose, 3/4" X 50' (15 m) w/out Couplers	1034	Insulated External Whip, 2.50–3.00" PP, 3.50–4.00"	40229
Hose, 3/4" X 65' (20 m) w/out Couplers	1109	Lock Down Head, 3.50" CAT	35066

Replacement Parts		Contact Dealer or HammerHead Customer Service to replace head assembly.	
Striker Ring, 3.50"	35010	Control Stud, 2.50–3.50" PP	25115
Single Lock Coupling (F) X 3/4" FNPT	40214	Control Stem, 3.50" PP	35020
External Whip, 2.50–3.00" PP, 3.50–4.00" ALL	40227	Isolator Half L, 3.50" PP	35032
Tailbolt, 3–5.75"	30221	Isolator Half S, 3.50" PP	35033
Striker, 3.50" CAT PP	35004	Valve Replacement Kit, 3.50" PP	35042
Rear Anvil, 3.50" PP	35005	Valve Ring Replacement Kit, 3.50" PP	35043
Tailcone, 3.50" PP	35006	Body Assy 3.50" CAT	35038
Control Sleeve, 3.50" PP	35017	Single Lock Coupling (F) X 3/4" FNPT	40214

Pulling Accessories			
Pulling Carrot, 0.50–1.00" Pipe, 1/2" MNPT	30445	Pipe Pilot Kit, 3.50" PP (2.50" Plastic Pipe)	35045
Pneumatic Fitting with Eyebolt	30293	Pulling Cable Assembly	34242
Quick Link, 5/16"	43244	Stick Pipe Pulling Kit, 3.50" PP DF (2.50" Plastic Pipe)	35046
Shackle, 1/2", Stainless Steel	35047		

Service Tools			
Chain Clamp/Wrench	1026	3/8", 12-PT, Socket	30260
Rear Anvil Wrench, (3.00–8.00" tools)	30254	Service Kit, 3.50–4.375" CAT	40445
Hex Driver, 5/32", for control stud	20735		

3.50" (89 mm) RH PP DF, PN: 35022



RH – Replaceable Head, PP – Power Port® Reverse, DF – Debris Free



Piercing Tools and Piercing Tool Packages

Description	Part #	Notes
Tool Assembly, 3.50" (89 mm) RH PP DF	35022	
Tool Assembly, 3.50" (89 mm) RH PP DF MT	35222	Moletrac® Piercing Tool includes housing, beacon cap and beacon sleeve
Kit, 3.50" (89 mm) RH PP DF	35022-1	Includes 50' (15.2 m) Mole Supply Hose, Couplers, Quick Reverse Swivel Kit and Oiler
Kit Int, 3.50" (89 mm) RH PP DF	35022-2	
Kit, 3.50" (89 mm) RH PP DF MT	35222-1	Includes housing, beacon cap, beacon sleeve, 50' (15.2 m) Mole Supply Hose, Couplers, Quick Reverse Swivel Kit and Oiler (does not include beacon or locator)
Kit Int, 3.50" (89 mm) RH PP DF MT	35222-2	

Standard Accessories

Description	Part #	Description	Part #
Kit, Aiming Sight and Stake	40145	Single Lock Coupling (M) X 3/4" MNPT w/ Lock Ring	30319
Launching Platform Kit, 3.50" tools and larger	925-0001	Assy, Quick Reverse Swivel	1117
Oiler Assembly, Standard	1150	Single Lock Coupling, F X F	1009
Oiler Assembly, Euro	1151	Claw Fitting, Oiler, Claw X 3/4" MNPT (DOM)	1001
Gel Cap, Hose Cover, 2.50–4.00" Tools	2029	Claw Fitting, Oiler, Claw X 3/4" MNPT (INTL)	1027
Inline Regulator Assembly	1647	Insulated External Whip, 2.50–3.00" PP, 3.50–4.00"	40229
Hose, 3/4" X 50' (15 m) w/out Couplers	1034	Expander, 5.50"	35063
Hose, 3/4" X 65' (20 m) w/out Couplers	1109	Stepped Head, 3.50" RH Tools	35064
Hose, 3/4" X 82' (25 m) w/out Couplers	1128	Gumbo Head, 3.50" RH Tools	35065

Replacement Parts

Striker Ring, 3.50"	35010	Control Stem, 3.50" PP	35020
Single Lock Coupling (F) X 3/4" FNPT	40214	Cut Isolator Half L, 3.50" PP	35032
External Whip, 2.50–3.00" PP, 3.50–4.00" ALL	40227	Cut Isolator Half S, 3.50" PP	35033
Tailbolt, 3.00–5.75"	30221	Valve Replacement Kit, 3.50" PP	35042
Striker, 3.50" RH PP	35014	Valve Ring Replacement Kit, 3.50" PP	35043
Rear Anvil, 3.50" PP	35005	Body Assy, 3.50" RH PP	35040
Tailcone, 3.50" PP	35006	Wear Face, 3.50" RH	35027
Control Sleeve, 3.50" PP	35017	Anvil Nut, 3.50", 4.00", & 5.50" RH	38207
Control Stud, 2.50–3.50" PP	25115		

Moletrac® Accessories

Beacon Housing Kit, 3.50" & 4.00" RH Tools (Incl housing, beacon cap assy and beacon sleeve)	30733	Beacon Cap Assy 2.50–4.00" RH	30731
BI Beacon 2.50–4.00" RH Tools (AccuView Cam Receiver)	30737	Beacon Sleeve	30730
AccuView® Cam Receiver for 2.50–4.00" RH Tools	912-5669		

Pulling Accessories

Pulling Carrot, 0.50–1.00" Pipe, 1/2" MNPT	30445	Pipe Pilot Kit, 3.50" PP (2.50" Plastic Pipe)	35045
Pneumatic Fitting with Eyebolt	30293	Pulling Cable Assembly	34242
Quick Link, 5/16"	43244	Stick Pipe Pulling Kit, 3.50" PP DF (2.50" Plastic Pipe)	35046
Shackle, 1/2", Stainless Steel	35047		

Service Tools

Chain Clamp/Wrench	1026	Hex Driver, 5/32", for control stud	20735
Rear Anvil Wrench, (3.00–8.00" tools)	30254	3/8", 12-PT, Socket	30260

4.00" (98 mm) CAT PP DF, PN: 40322

CAT – Catamount, PP – Power Port® Reverse, DF – Debris Free



4.00" (98 mm)

Piercing Tools and Piercing Tool Packages

Description	Part #	Notes
Tool Assembly, 4.00" (98 mm) CAT PP DF	40322	
Kit, 4.00" (98 mm) CAT PP DF	40322 -1	Includes 50' (15.2 m) Mole Supply Hose, Couplers, Quick Reverse Swivel Kit and Oiler
Kit Int, 4.00" (98 mm) CAT PP DF	40322 -2	

Standard Accessories

Description	Part #	Description	Part #
Kit, Aiming Sight and Stake	40145	Assy, Quick Reverse Swivel	1117
Launching Platform, Large Tool	925-0001	Single Lock Coupling, F X F	1009
Oiler Assembly, Standard	1150	Claw Fitting, Oiler, Claw X 3/4" MNPT (DOM)	1001
Oiler Assembly, Euro	1151	Claw Fitting, Oiler, Claw X 3/4" MNPT (INTL)	1027
Gel Cap, Hose Cover, 2.50–4.00" Tools	2029	Insulated External Whip, 2.50–3.00" PP, 3.50–4.00"	40229
Inline Regulator Assembly	1647	Expander, 5.50", For 4.00" Tool (Must be run in reverse)	37270
Hose, 3/4" X 50' (15 m) w/out Couplers	1034	Expander, 6.00", For 4.00" Tool (Must be run in reverse)	37273
Hose, 3/4" X 65' (20 m) w/out Couplers	1109	Expander, 7.00", For 4.00" Tool (Must be run in reverse)	37274
Hose, 3/4" X 82' (25 m) w/out Couplers	1128	Lock Down Head, 4.00" CAT	40326
Single Lock Coupling (M) X 3/4" MNPT w/ Lock Ring	30319		

Replacement Parts

Replacement Parts	Part #	Contact Dealer or HammerHead Customer Service to replace head assembly.	Part #
Striker Ring, 4.00" ALL & 5.50" SR	38208	Tailcone, 4.00" PP	40416
Body Assy, 4.00" CAT PP	40324	Striker, 4.00" CAT PP	40312
Control Stem, 4.00" PP	40420	Valve Replacement Kit, 4.00" PP	40421
Isolator, 4.00" PP (4 Required)	40404	Valve Ring Replacement Kit, 4.00" PP	40423
Rear Anvil, 4.00" PP	40415	Tailbolt, 3.00–5.75"	30221
Control Sleeve, 4.00" PP	40405	External Whip, 2.50–3.00" PP, 3.50–4.00" ALL	40227
Control Stud, 4.00–5.125" PP	43215	Single Lock Coupling (F) X 3/4" FNPT	40214

Pulling Accessories

Description	Part #	Description	Part #
Pulling Carrot, 0.50–1.00" Pipe, 1/2" MNPT	30445	Pipe Pilot Kit, 4.00" PP DF (125 mm Pipe)	40449/40414
Pneumatic Fitting with Eyebolt	30293	Pulling Cable Assembly	40285
Quick Link, 5/16"	43244	Clevis Nut	30304
Quick Links, 5/32"	30302	Stick Pipe Pulling Kit, 4.00" PP DF (3.00" Pipe)	40433
Shackle, 1/2", Stainless Steel	35047	Stick Pipe Pulling Kit, 4.00" PP DF (4.00" Plastic Pipe)	40448
Pipe Pilot Kit, 4.00" PP DF (3.00" Pipe)	40432	Stick Pipe Pulling Kit, 4.00" PP DF (125 mm Pipe)	40450
Pipe Pilot Kit, 4.00" PP DF (4.00" Pipe)	40296/40414		

Service Tools

Description	Part #	Description	Part #
Chain Clamp/Wrench	1026	3/8", 12-PT, Socket	30260
Rear Anvil Wrench, (3.00–8.00" tools)	30254	Service Kit, 3.50–4.375" CAT	40445
Hex Driver, 1/4", for control stud	9517		

4.00" (98 mm) RH PP DF, PN: 40422



RH – Replaceable Head, PP – Power Port® Reverse, DF – Debris Free



Piercing Tools and Piercing Tool Packages

Description	Part #	Notes
Tool Assembly, 4.00" (98 mm) RH PP DF	40422	
Tool Assembly, 4.00" (98 mm) RH PP DF MT	40522	Moletrac® Piercing Tool includes housing, beacon cap and beacon sleeve
Kit, 4.00" (98 mm) RH PP DF	40422-1	Includes 50' (15.2 m) Mole Supply Hose, Couplers, Quick Reverse Swivel Kit and Oiler
Kit Int, 4.00" (98 mm) RH PP DF	40422-2	
Kit, 4.00" (98 mm) RH PP DF MT	40522-1	Includes housing, beacon cap, beacon sleeve, 50' (15.2 m) Mole Supply Hose, Couplers, Quick Reverse Swivel Kit and Oiler (does not include beacon or locator)
Kit Int, 4.00" (98 mm) RH PP DF MT	40522-2	

Standard Accessories

Description	Part #	Description	Part #
Kit, Aiming Sight and Stake	40145	Assy, Quick Reverse Swivel	1117
Launching Platform, Large Tool	925-0001	Single Lock Coupling, F X F	1009
Oiler Assembly, Standard	1150	Claw Fitting, Oiler, Claw X 3/4" MNPT (DOM)	1001
Oiler Assembly, Euro	1151	Claw Fitting, Oiler, Claw X 3/4" MNPT (INTL)	1027
Gel Cap, Hose Cover, 2.50–4.00" Tools	2029	Insulated External Whip, 2.50–3.00" PP, 3.50–4.00"	40229
Inline Regulator Assembly	1647	Expander, 5.50", For 4.00" Tool	37270
Hose, 3/4" X 50' (15 m) w/out Couplers	1034	Expander, 6.00", For 4.00" Tool	37273
Hose, 3/4" X 65' (20 m) w/out Couplers	1109	Expander, 7.00", For 4.00" Tool)	37274
Hose, 3/4" X 82' (25 m) w/out Couplers	1128	Stepped Head, 4.00" RH Tools	40446
Single Lock Coupling (M) X 3/4" MNPT w/ Lock Ring	30319	Gumbo Head, 4.00" RH Tools	40447

Replacement Parts

Striker Ring, 4.00" ALL & 5.50" SR	38208	Tailcone, 4.00" PP	40416
Body Assy, 4.00" RH PP	40418	Striker, 4.00" RH PP	40409
Control Stem, 4.00" PP	40420	Valve Replacement Kit, 4.00" PP	40421
Isolator, 4.00" PP (4 Required)	40404	Valve Ring Replacement Kit, 4.00" PP	40423
Rear Anvil, 4.00" PP	40415	Tailbolt, 3.00–5.75"	30221
Control Sleeve, 4.00" PP	40405	External Whip, 2.50–3.00" PP, 3.50–4.00" ALL	40227
Control Stud, 4.00–5.125" PP	43215	Single Lock Coupling (F) X 3/4" FNPT	40214

Moletrac® Accessories

Beacon Housing Kit, 3.50" & 4.00" RH Tools (Incl housing, beacon cap assy and beacon sleeve)	30733	Beacon Cap Assy 2.50–4.00" RH	30731
BI Beacon 2.50–4.00" RH Tools (AccuView Cam Receiver)	30737	Beacon Sleeve	30730
AccuView® Cam Receiver for 2.50–4.00" RH Tools	912-5669		

Pulling & Piling Accessories

Pulling Carrot, 0.50–1.00" Pipe, 1/2" MNPT	30445	Pipe Pilot Kit, 4.00" PP DF (125 mm Pipe)	40449/40414
Pneumatic Fitting with Eyebolt	30293	Pulling Cable Assembly	40285
Quick Link, 5/16"	43244	Clevis Nut	30304
Quick Links, 5/32"	30302	Stick Pipe Pulling Kit, 4.00" PP DF (3.00" Pipe)	40433
Shackle, 1/2", Stainless Steel	35047	Stick Pipe Pulling Kit, 4.00" PP DF (4.00" Plastic Pipe)	40448
Pipe Pilot Kit, 4.00" PP DF (3.00" Pipe)	40432	Stick Pipe Pulling Kit, 4.00" PP DF (125 mm Pipe)	40450
Pipe Pilot Kit, 4.00" PP DF (4.00" Pipe)	40296/40414	Tailcone w/ Cable Assembly, 4.00" PP DF (Piling)	40417

Service Tools

Chain Clamp/Wrench	1026	3/8", 12-PT, Socket	30260
Rear Anvil Wrench, (3.00–8.00" tools)	30254	Socket, Anvil Nut	40357
Hex Driver, 1/4", for control stud	9517		


Piercing Tools and Piercing Tool Packages

Description	Part #	Notes
Tool Assembly, 4.00" (98 mm) RH SR	38222	
Tool Assembly, 4.00" (98 mm) RH SR MT	38322	Moletrac® Piercing Tool includes housing, beacon cap and beacon sleeve
Kit, 4.00" (98 mm) RH SR	38222-1	Includes 50' (15.2 m) Mole Supply Hose, Couplers, Quick Reverse Swivel Kit and Oiler
Kit Int, 4.00" (98 mm) RH SR	38222-2	
Kit, 4.00" (98 mm) RH SR MT	38322-1	Includes housing, beacon cap, beacon sleeve, 50' (15.2 m) Mole Supply Hose, Couplers, Quick Reverse Swivel Kit and Oiler (does not include beacon or locator)
Kit Int, 4.00" (98 mm) RH SR MT	38322-2	

Standard Accessories

Description	Part #	Description	Part #
Kit, Aiming Sight and Stake	40145	Assy, Quick Reverse Swivel	1117
Launching Platform, Large Tool	925-0001	Single Lock Coupling, F X F	1009
Oiler Assembly, Standard	1150	Claw Fitting, Oiler, Claw X 3/4" MNPT (DOM)	1001
Oiler Assembly, Euro	1151	Claw Fitting, Oiler, Claw X 3/4" MNPT (INTL)	1027
Gel Cap, Hose Cover, 2.50–4.00" Tools	2029	Insulated External Whip, 2.50–3.00" PP, 3.50–4.00"	40229
Inline Regulator Assembly	1647	Expander, 5.50", For 4.00" Tool	37270
Hose, 3/4" X 50' (15 m) w/out Couplers	1034	Expander, 6.00", For 4.00" Tool	37273
Hose, 3/4" X 65' (20 m) w/out Couplers	1109	Expander, 7.00", For 4.00" Tool	37274
Hose, 3/4" X 82' (25 m) w/out Couplers	1128	Stepped Head, 4.00" RH Tools	40446
Single Lock Coupling (M) X 3/4" MNPT w/ Lock Ring	30319	Gumbo Head, 4.00" RH Tools	40447

Replacement Parts

Striker Ring, 4.00"	38208	Striker, 4.00" SR	41204
Valve Ring, 4.00" SR	37211	Rear Anvil, 4.00" SR	40205
External Whip, 2.50–3.00" PP, 3.50–4.00" ALL	40227	Valve Retainer, 4.00" SR	40209
Hose, Internal, Valve End 4.00" SR	40226	Tailcone, 4.00" SR	37206
Tailbolt, 3.00–5.75"	30221	Valve, 4.00" SR	37208
Body Assy, 4.00" SR	38200	Quick Connect, (F), 2.50–3.00" PP, 3.50–4.00" ALL	40214

Moletrac® Accessories

Beacon Housing Kit, 3.50" & 4.00" RH Tools (Incl housing, beacon cap assy and beacon sleeve)	30733	Beacon Cap Assy 2.50–4.00" RH	30731
BI Beacon 2.50–4.00" RH Tools (AccuView Cam Receiver)	30737	Beacon Sleeve	30730
AccuView® Cam Receiver for 2.50–4.00" RH Tools	912-5669		

Pulling Accessories

Description	Part #	Description	Part #
Pulling Carrot, 0.50–1.00" Pipe, 1/2" MNPT	30445	Pipe Pilot Kit, 4.00" SR (4.00" Plastic Pipe)	40296
Pneumatic Fitting with Eyebolt	30293	Pulling Cable Assembly	40285
Quick Links, 5/32"	30302	Clevis Nut	30304
Shackle, 1/2", Stainless Steel	35047	Stick Pipe Pulling Kit, 4.00" Pipe (NOTE: For 5.50" Tool, 4.00" TOOL Requires 5.50" Expander PN: 37270)	40306
Tap Puller, 4.00", 4.00" (98mm) SR Tools (4 in tool requires 5.50" Expander, PN: 37270)	55265	Stick Pipe Pulling Kit, 3.00" Pipe, (Note: If pulling Belled PVC, 4.00" tool requires 5.50" Expander, PN: 37270)	40293
Pipe Pilot Kit, 4.00" SR (3.00" Plastic Pipe)	40258		

Service Tools

Chain Clamp/Wrench	1026	3/8", 12-PT, Socket	30260
Rear Anvil Wrench, (3.00–8.00" tools)	30254	Socket, Anvil Nut	40357
Hex Key, Long, 1/2", for Valve Retainer	40259		

4.375" (111 mm) CAT PP DF, PN: 43222

CAT – Catamount, PP – Power Port® Reverse, DF – Debris Free



Piercing Tools and Piercing Tool Packages

Description	Part #	Notes
Tool Assembly, 4.375" (111 mm) CAT PP DF	43222	
Kit, 4.375" (111 mm) CAT PP DF	43222-1	Includes 50' (15.2 m) Mole Supply Hose, Couplers, Quick Reverse Swivel Kit and Oiler
Kit Int, 4.375" (111 mm) CAT PP DF	43222-2	

Standard Accessories

Description	Part #	Description	Part #
Kit, Aiming Sight and Stake	40145	Hose, 3/4" X 82' (25 m) w/out Couplers	1128
Launching Platform, Large Tool	925-0001	Single Lock Coupling (M) X 3/4" MNPT w/ Lock Ring	30319
Oiler Assembly, Standard	1150	Assy, Quick Reverse Swivel	1117
Oiler Assembly, Euro	1151	Single Lock Coupling, F X F	1009
Inline Regulator Assembly	1647	Claw Fitting, Oiler, Claw X 3/4" MNPT (DOM)	1001
Hose, 3/4" X 50' (15 m) w/out Couplers	1034	Claw Fitting, Oiler, Claw X 3/4" MNPT (INTL)	1027
Hose, 3/4" X 65' (20 m) w/out Couplers	1109	Lock Down Head, 4.375" CAT	43256

Replacement Parts

Contact Dealer or HammerHead Customer Service to replace head assembly.

Striker Ring, 4.375"	43210	External Whip, 4.375" PP	43227
Valve Assy, 4.375" PP	43208	Tailcone, 4.375" PP	43206
Control Stem, 4.375" PP	43247	Valve Ring Replacement Kit, 4.375" PP	43235
Control Sleeve, 4.375" PP	43217	Valve Replacement Kit, 4.375" PP	43248
Rear Anvil, 4.375" PP	43205	Control Stud, 4.00–5.125" PP	43215
Isolator Half, 4.375" PP (2 needed)	43220	Body Assy, 4.375" CAT	43200
Tailbolt, 3.00–5.75"	30221	Striker, 4.375" CAT	43204

Pulling Accessories

Pulling Carrot, 0.50–1.00" Pipe, 1/2" MNPT	30445	Pulling Cable Assembly	43242
Pneumatic Fitting with Eyebolt	30293	Quick Link, 5/16"	43244
Quick Links, 5/32"	30302	Stick Pipe Pulling Kit, 4.375" PP (3.00" Plastic Pipe)	43241
Pipe Pilot Kit, 4.375" PP DF (3.00" Plastic Pipe)	43240		

Service Tools

Chain Clamp/Wrench	1026	3/8", 12-PT, Socket	30260
Rear Anvil Wrench, (3.00–8.00" tools)	30254	Service Kit, 3.50–4.375" CAT	40445
Hex Driver, 1/4", for control stud	9517		

5.125" (130 mm) CAT PP DF, PN: 51322

CAT – Catamount, PP – Power Port® Reverse, DF – Debris Free



5.125" (130 mm)

Piercing Tools and Piercing Tool Packages

Description	Part #	Notes
Tool Assembly, 5.125" (130 mm) CAT PP DF	51322	
Kit, 5.125" (130 mm) CAT PP DF	51322-1	Includes 50' (15.2 m) Mole Supply Hose, Couplers and Oiler
Kit Int, 5.125" (130 mm) CAT PP DF	51322-2	

Standard Accessories

Description	Part #	Description	Part #
Kit, Aiming Sight and Stake	40145	Hose, 1.25" X 82' (25 m) w/ Couplers	1107
Launching Platform, Large Tool	925-0001	Swivel Plug (M) X 1.00" FNPT	1661
Oiler Assy, 5.125 PP, Standard	1660	Swivel Coupler Socket (F) X 1.00" MNPT	1668
Oiler Assy, 5.125 PP, International	1672	Quick Connect (M) X 1.00" (M) JIC w/ Lock Ring	51429
Inline Regulator Assembly	1647	Single Lock Coupling (F) X 1.00" FNPT	51425
Hose, 1.25" X 50' (15 m) w/ Couplers	1089	Lock Down Head, 5.125" CAT	51348
Hose, 1.25" X 65' (20 m) w/ Couplers	1106		

Replacement Parts

Part #	Description	Part #	Description
51324	Body Assy, 5.125" CAT	51420	Control Stem, 5.125" PP
51210	Striker Ring, 5.125"	51415	Rear Anvil, 5.125" PP
51312	Striker, 5.125" CAT	51417	Spacer, Split 5.125" PP
51423	Valve Ring Replacement Kit, 5.125" PP	51408	Isolator, 5.125" PP
51424	Valve Replacement Kit, 5.125" PP	51416	Tailcone, 5.125" PP
51410	Control Sleeve, 5.125" PP	30221	Tailbolt, 3.00–5.75"
43215	Control Stud, 4.00–5.125" PP	51418	External Whip, 5.125" PP

Contact Dealer or HammerHead Customer Service to replace head assembly.

Pulling Accessories

Description	Part #	Description	Part #
Pneumatic Fitting with Eyebolt, 1/2" FNPT (5.125" PP)	51426	Pulling Cable Assembly (4.00" Plastic Pipe)	43242
Quick Links, 5/32"	30302	Pulling Cable Assembly (6.00" Plastic Pipe)	40285
Quick Link, 5/16"	43244	Stick Pipe Pulling Kit, 5.125" PP (4.00" Plastic Pipe)	51404
Pipe Pilot Kit, 5.125" PP DF (4.00" Plastic Pipe)	51403	Stick Pipe Pulling Kit, 5.125" PP (6.00" Plastic Pipe)	51437
Pipe Pilot Kit, 5.125" PP DF (6.00" Plastic Pipe)	51438		

Service Tools

Description	Part #	Description	Part #
Rear Anvil Wrench, (3.00–8.00" tools)	30254	Hex Driver, 1/4", for control stud	9517
3/8", 12-PT, Socket	30260	Service Kit, 5.125" CAT	51345

5.125" (130 mm) PP DF, PN: 51422

PP – Power Port® Reverse, DF – Debris Free



Piercing Tools and Piercing Tool Packages

Description	Part #	Notes
Tool Assembly, 5.125" (130 mm) PP DF	51422	
Kit, 5.125" (130 mm) PP DF	51422-1	Includes 50' (15.2 m) Mole Supply Hose, Couplers and Oiler
Kit Int, 5.125" (130 mm) PP DF	51422-2	

Standard Accessories

Description	Part #	Description	Part #
Kit, Aiming Sight and Stake	40145	Hose, 1.25" X 82' (25 m) w/ Couplers	1107
Launching Platform, Large Tool	925-0001	Swivel Plug (M) X 1.00" FNPT	1661
Oiler Assy, 5.125 PP, Standard	1660	Swivel Coupler Socket (F) X 1.00" MNPT	1668
Oiler Assy, 5.125 PP, International	1672	Quick Connect (M) X 1.00" (M) JIC w/ Lock Ring	51429
Inline Regulator Assembly	1647	Single Lock Coupling (F) X 1.00" FNPT	51425
Hose, 1.25" X 50' (15 m) w/ Couplers	1089	Expander, 7.50"	51270
Hose, 1.25" X 65' (20 m) w/ Couplers	1106		

Replacement Parts

Body Assy, 5.125" PP	51435	Control Stem, 5.125" PP	51420
Striker Ring, 5.125"	51210	Rear Anvil, 5.125" PP	51415
Striker, 5.125" PP	51409	Spacer, Split 5.125" PP	51417
Valve Ring Replacement Kit, 5.125" PP	51423	Isolator, 5.125" PP	51408
Valve Replacement Kit, 5.125" PP	51424	Tailcone, 5.125" PP	51416
Control Sleeve, 5.125" PP	51410	Tailbolt, 3.00–5.75"	30221
Control Stud, 4.00–5.125" PP	43215	External Whip, 5.125" PP	51418

Pulling & Piling Accessories

Pneumatic Fitting with Eyebolt, 1/2" FNPT (5.125" PP)	51426	Pulling Cable Assembly (4.00" Plastic Pipe)	43242
Quick Links, 5/32"	30302	Pulling Cable Assembly (6.00" Plastic Pipe)	40285
Quick Link, 5/16"	43244	Stick Pipe Pulling Kit, 5.125" PP (4.00" Plastic Pipe)	51404
Pipe Pilot Kit, 5.125" PP DF (4.00" Plastic Pipe)	51403	Stick Pipe Pulling Kit, 5.125" PP (6.00" Plastic Pipe)	51437
Pipe Pilot Kit, 5.125" PP DF (6.00" Plastic Pipe)	51438	Tailcone w/ Cable Assembly, 5.125" PP DF (Piling)	51428

Service Tools

Rear Anvil Wrench, (3.00–8.00" tools)	30254	Hex Driver, 1/4", for control stud	9517
3/8", 12-PT, Socket	30260		

5.125" (130 mm) SR, PN: 51222

SR – Screw Reverse



5.125" (130 mm)

Piercing Tools and Piercing Tool Packages

Description	Part #	Notes
Tool Assembly, 5.125" (130 mm) SR	51222	
Kit, 5.125" (130 mm) SR	51222-1	Includes 50' (15.2 m) Mole Supply Hose, Couplers, Quick Reverse Swivel Kit and Oiler
Kit Int, 5.125" (130 mm) SR	51222-2	

Standard Accessories

Description	Part #	Description	Part #
Kit, Aiming Sight and Stake	40145	Hose, 1.00" X 82' (25 m) w/out Couplers	1104
Launching Platform, Large Tool	925-0001	Single Lock Coupling (M) X 3/4" MNPT w/ Lock Ring	30319
Oiler Assembly, Standard	1150	Assy, Quick Reverse Swivel	1117
Oiler Assembly, Euro	1151	Single Lock Coupling, F X F	1009
Inline Regulator Assembly	1647	Claw Fitting, Oiler, Claw X 3/4" MNPT (DOM)	1001
Hose, 1.00" X 50' (15 m) w/out Couplers	1036	Claw Fitting, Oiler, Claw X 3/4" MNPT (INTL)	1027
Hose, 1.00" X 65' (20 m) w/out Couplers	1129	Expander, 7.50"	51270

Replacement Parts

Striker Ring, 5.125"	51210	Striker, 5.125" SR	51604
Valve Ring, 5.125" SR	51211	Rear Anvil, 5.125" SR	51205
External Whip, 5.125" SR	51227	Tailcone, 5.125" SR	51206
Hose, Internal, Valve End, 5.125" SR	51226	Valve, 5.125" SR	51208
Tailbolt, 3.00–5.75"	30221	Single Lock Coupling (F) X 3/4" FNPT	1007
Body Assy, 5.125" SR	51100		

Pulling Accessories

Pneumatic Fitting with Eyebolt, 1/2" FNPT	30293	Pipe Pilot Kit, 5.125" SR (6.00" Plastic Pipe)	51266
Quick Links, 5/32"	30302	Pulling Cable Assembly	51285
Quick Links, 1/4"	30333	Stick Pipe Pulling Kit, 5.125" SR (4.00" Plastic Pipe)	51293
Pipe Pilot Kit, 5.125" SR (4.00" Plastic Pipe)	51295	Stick Pipe Pulling Kit, 5.125" SR (6.00" Plastic Pipe)	51294

Service Tools

Rear Anvil Wrench, (3.00–8.00" tools)	30254	Hex Key, 5.125" tool, for valve	51259
3/8", 12-PT, Socket	30260	Lift Strap, Mole (EA)	80288

5.50" (140 mm) RH SR BU, PN: 58222



RH – Replaceable Head, SR – Screw Reverse, BU – Bulbed



Piercing Tools and Piercing Tool Packages

Description	Part #	Notes
Tool Assembly, 5.50" (140 mm) RH SR BU	58222	
Tool Assembly, 5.50" (140 mm) RH SR BU MT	58122	Moletrac® Piercing Tool includes housing, beacon cap and beacon sleeve
Kit, 5.50" (140 mm) RH SR BU	58222-1	Includes 50' (15.2 m) Mole Supply Hose, Couplers, Quick Reverse Swivel Kit and Oiler
Kit Int, 5.50" (140 mm) RH SR BU	58222-2	
Kit, 5.50" (140 mm) RH SR BU MT	58122-1	Includes housing, beacon cap, beacon sleeve, 50' (15.2 m) Mole Supply Hose, Couplers, Quick Reverse Swivel Kit and Oiler (does not include beacon or locator)
Kit Int, 5.50" (140 mm) RH SR BU MT	58122-2	

Standard Accessories

Description	Part #	Description	Part #
Kit, Aiming Sight and Stake	40145	Assy, Quick Reverse Swivel	1117
Launching Platform, Large Tool	925-0001	Single Lock Coupling, F X F	1009
Oiler Assembly, Standard	1150	Claw Fitting, Oiler, Claw X 3/4" MNPT (DOM)	1001
Oiler Assembly, Euro	1151	Claw Fitting, Oiler, Claw X 3/4" MNPT (INTL)	1027
Gel Cap, Hose Cover, 2.50–4.00" Tools	2029	Insulated External Whip, 2.50–3.00" PP, 3.50–4.00"	40229
Inline Regulator Assembly	1647	Expander, 5.50", For 4.00" Tool	37270
Hose, 3/4" X 50' (15 m) w/out Couplers	1034	Expander, 6.00", For 4.00" Tool	37273
Hose, 3/4" X 65' (20 m) w/out Couplers	1109	Expander, 7.00", For 4.00" Tool	37274
Hose, 3/4" X 82' (25 m) w/out Couplers	1128	Stepped Head, 4.00" RH Tools	40446
Single Lock Coupling (M) X 3/4" MNPT w/ Lock Ring	30319	Gumbo Head, 4.00" RH Tools	40447

Replacement Parts

Striker Ring, 4.00"	38208	Striker, 4.00" SR	41204
Valve Ring, 4.00" SR	37211	Rear Anvil, 4.00" SR	40205
External Whip, 2.50–3.00" PP, 3.50–4.00" ALL	40227	Valve Retainer, 4.00" SR	40209
Hose, Internal, Valve End 4.00" SR	40226	Tailcone, 4.00" SR	37206
Tailbolt, 3.00–5.75"	30221	Valve, 4.00" SR	37208
Body Assy, 5.50" SR BU	58200	Single Lock Coupling (F) X 3/4" FNPT	40214

Moletrac® Accessories

Beacon Housing Kit, 3.50" & 4.00" RH Tools (Incl housing, beacon cap assy and beacon sleeve)	30733	Beacon Cap Assy 2.50–4.00" RH	30731
BI Beacon 2.50–4.00" RH Tools (AccuView Cam Receiver)	30737	Beacon Sleeve	30730
AccuView® Cam Receiver	912-5669		

Pulling Accessories

Pulling Carrot, 0.50–1.00" Pipe, 1/2" MNPT	30445	Pipe Pilot Kit, 4.00" SR (3.00" Plastic Pipe)	40258
Pneumatic Fitting with Eyebolt	30293	Pipe Pilot Kit, 4.00" SR (3.00" Plastic Pipe)	40296
Quick Links, 5/32"	30302	Pulling Cable Assembly	30285
Shackle, 1/2", Stainless Steel	35047	Stick Pipe Pulling Kit, 4.00" Pipe (NOTE: For 5.50" Tool, 4.00" TOOL Requires 5.50" Expander PN: 37270)	40306
Tap Puller, 4.00", 4.00" (98mm) SR Tools (4 in tool requires 5.50" Expander, PN: 37270)	55265	Stick Pipe Pulling Kit, 3.00" Pipe, (Note: If pulling Belled PVC, 4.00" tool requires 5.50" Expander, PN: 37270)	40293
Clevis Nut	30304		

Service Tools

Chain Clamp/Wrench	1026	3/8", 12-PT, Socket	30260
Rear Anvil Wrench, (3.00–8.00" tools)	30254	Socket, Anvil Nut	40357
Hex Key, Long, 1/2", for Valve Retainer	40259		

5.625" (143 mm) PP BU DF, PN: 51722

PP – Power Port® Reverse, BU – Bulb, DF – Debris Free



5.625" (143 mm)

Piercing Tools and Piercing Tool Packages

Description	Part #	Notes
Tool Assembly, 5.625" (143mm) PP BU DF	51722	
Kit, 5.625" (143mm) PP BU DF	51722-1	Includes 50' (15.2 m) Mole Supply Hose, Couplers, Oiler Supply Hose and Oiler
Kit Int, 5.625" (143mm) PP BU DF	51722-2	

Standard Accessories

Description	Part #	Description	Part #
Kit, Aiming Sight and Stake	40145	Hose, 1.25" X 82' (25 m) w/ Couplers	1107
Launching Platform, Large Tool	925-0001	Swivel Plug (M) X 1.00" FNPT	1661
Oiler Assy, 5.125" PP, Standard	1660	Swivel Coupler Socket (F) X 1.00" MNPT	1668
Oiler Assy, 5.125" PP, International	1672	Quick Connect (M) X 1.00" (M) JIC w/ Lock Ring	51429
Inline Regulator Assembly	1647	Single Lock Coupling (F) X 1.00" FNPT	51425
Hose, 1.25" X 50' (15 m) w/ Couplers	1089	Expander, 7.50"	51270
Hose, 1.25" X 65' (20 m) w/ Couplers	1106		

Replacement Parts

Body Assy, 5.625" PP	51700	Control Stem, 5.125" PP	51420
Striker Ring, 5.125"	51210	Rear Anvil, 5.125" PP	51415
Striker, 5.125" PP	51409	Spacer, Split 5.125" PP	51417
Valve Ring Replacement Kit, 5.125" PP	51423	Isolator, 5.125" PP	51408
Valve Replacement Kit, 5.125" PP	51424	Tailcone, 5.125" PP	51416
Control Sleeve, 5.125" PP	51410	Tailbolt, 3.00–5.75"	30221
Control Stud, 4.00–5.125" PP	43215	External Whip, 5.125" PP	51418

Pulling Accessories

Pneumatic Fitting with Eyebolt, 1/2" FNPT (5.125" PP)	51426	Pulling Cable Assembly	43242
Quick Links, 5/32"	30302	Stick Pipe Pulling Kit, 5.625" PP BU (125 mm Plastic Pipe)	51440
Pipe Pilot Kit, 5.625" PP DF BU (125 mm Plastic Pipe)	51439	Quick Link, 5/16"	43244

Service Tools

Rear Anvil Wrench, (3.00–8.00" tools)	30254	Hex Driver, 1/4", for control stud	9517
3/8", 12-PT, Socket	30260		

5.75" (145 mm) SR, PN: 60222

SR – Screw Reverse



Piercing Tools and Piercing Tool Packages

Description	Part #	Notes
Tool Assembly, 5.75" (145mm) SR	60222	
Kit, 5.75" (145mm) SR	60222-1	Includes 50' (15.2 m) Mole Supply Hose, 50' (15.2 m) Oiler Supply Hose, Couplers and Oiler
Kit Int, 5.75" (145mm) SR	60222-2	

Standard Accessories

Description	Part #	Description	Part #
Kit, Aiming Sight and Stake	40145	Hose, 1.25" X 50' (15 m), SJIC (F)	1030
Launching Platform, Large Tool (requires 925-0004)	925-0001	Hose, 1.25" X 50' (15 m) w/ Couplers	1031
Adjustment Shaft, Launching Platform	925-0004	Expander, 8.00"	60270
Oiler, Large Tool	1300	Expander, 10.00"	60273
Inline Regulator Assembly	1647		

Replacement Parts

Striker Ring, 5.75"	60210	Striker, 5.75" SR	60504
Valve Ring, 5.75" SR	60211	Rear Anvil, 5.75" SR	60205
External Whip, 5.75" SR	60227	Tailcone, 5.75" SR	60206
Hose, Internal Valve EBD, 5.75" SR	61226	Valve Kit, 5.75" SR	61209
Tailbolt, 3.00–5.75"	30221	Shackle Mount, 5 3/4" SR	60112
Body Assy, 5.75" SR	60100		

Pulling Accessories

Description	Part #	Description	Part #
Pneumatic Fitting with Eyebolt	30293	Pulling Cable Assembly	60235
Quick Link, 5/32"	30302	Stick Pipe Pulling Kit, 5.75 SR (4.00" Plastic Pipe)	75294
Pipe Pilot Kit, 5.75" SR, (4.00" Plastic Pipe)	60299		

Service Tools

Rear Anvil Wrench, (3.00–8.00" tools)	30254	Lift Strap, Mole (EA)	80288
3/8", 12-PT, Socket (3.00" Socket)	30260		



HAMMERHEAD®
TRENCHLESS EQUIPMENT

500 South CP Avenue | Lake Mills, Wisconsin 53551 USA
800.331.6653 (USA only) | international: +1 920.648.4848
web: hammerheadtrenchless.com | email: info@hammerheadmole.com

Earth Tool Company LLC reserves the right to make changes in engineering, design and specifications; add improvements; or discontinue manufacture at any time without notice or obligation. Subsite® trademarks and AccuView are registered to Subsite Electronics, A Charles Machine Works Company. HAMMERHEAD, HAMMERHEAD MOLE, HAMMERHEAD LOGO, POWER PORT, ACTIVE HEAD AND MOLETRAC are registered trademarks of Earth Tool Company LLC, Lake Mills, WI. ©2016 Earth Tool Company LLC. All Rights Reserved. V.1 03/2016.



A CHARLES MACHINE WORKS COMPANY