



CX SERIES WALK-BEHIND TRENCHERS



WALK-BEHINDS



1 Utilizes the Ditch Witch 35K digging system or the new exclusive 19K Opticut™ System.

2 C24X features a low-maintenance, long lasting Honda® engine. C16X and C30X offers a reliable Briggs & Stratton engine.

3 Increased visibility of the workstation with color-coded controls improves operator productivity.

7 Newly designed hydraulic system is simple and reliable, with no linkages to adjust.

6 Greaseless sealed bearing design with construction-grade seals help increase machine longevity.

5 Standard outboard bearing support stabilizes the headshaft and auger, for reliable productivity trench after trench.

4 The shorter left track design allows for a more compact piece of equipment than competitive designs and more maneuverability in tighter spaces.

THE NEXT EVOLUTION OF THE BEST WALK-BEHIND EVER IS HERE.

Maximize your performance and return on investment with the Ditch Witch® CX Series Walk-Behind Trenchers. Our exclusive CX Track design delivers better traction and maneuverability in a more compact design for tighter jobsites. Responsive, easy-to-use controls provide smoother operation and reduce operator fatigue. Plus, a simple, open design for easy access and no daily grease points means less maintenance time to keep your CX Series fleet rental-ready.

WE'RE IN THIS TOGETHER.



OPTIONAL FEATURES

BACKFILL BLADE

- Our easy-to-operate backfill blade is much faster and more reliable than shovels, increasing productivity and rental revenue.



ROTO WITCH®

- The Roto Witch boring attachment results in fewer disturbances, less labor, and less restoration than tearing up driveways and sidewalks to complete an installation.

1 Hydrostatic, skid-steer style steering provides easier operation.

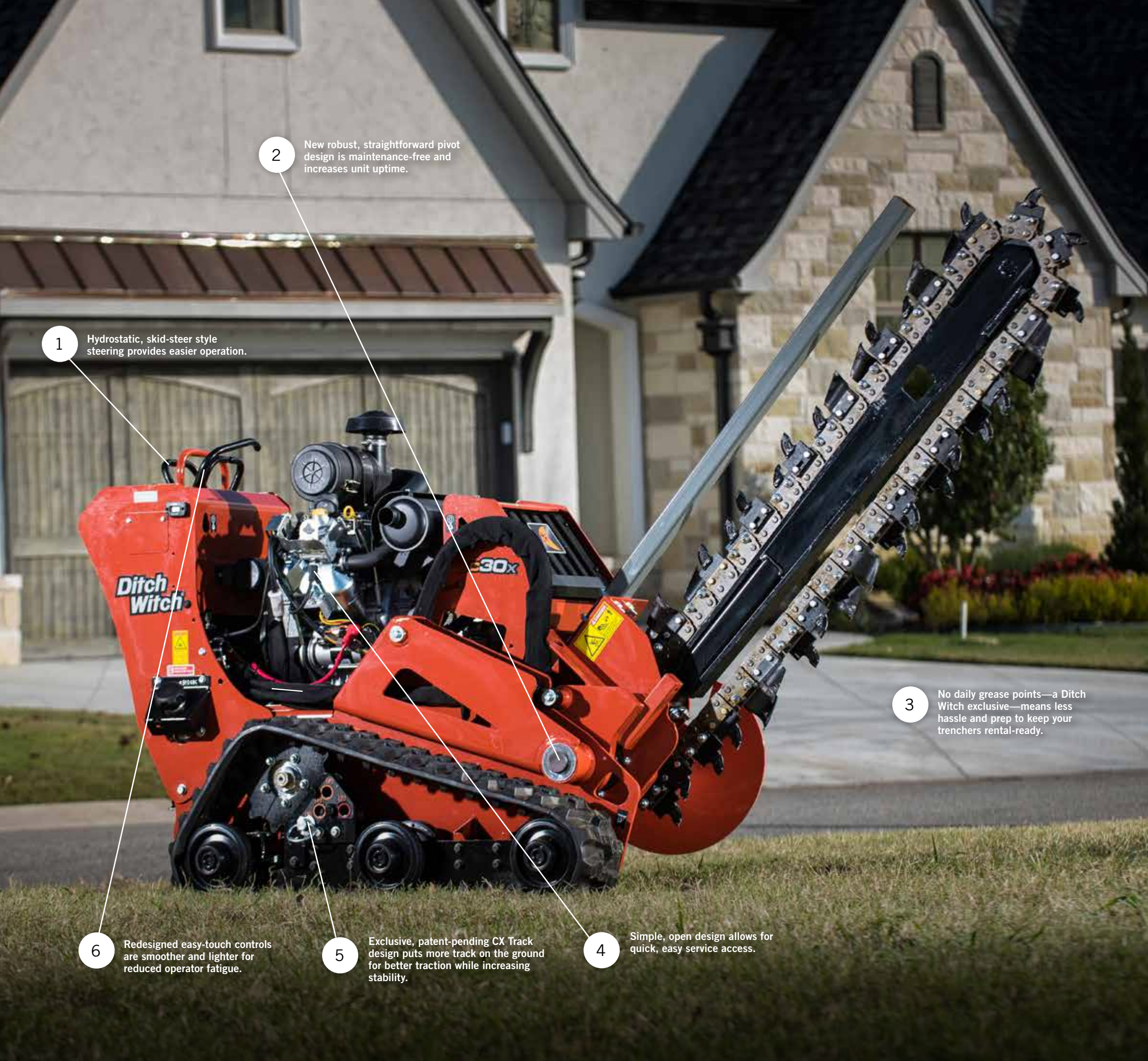
2 New robust, straightforward pivot design is maintenance-free and increases unit uptime.

3 No daily grease points—a Ditch Witch exclusive—means less hassle and prep to keep your trenchers rental-ready.

6 Redesigned easy-touch controls are smoother and lighter for reduced operator fatigue.

5 Exclusive, patent-pending CX Track design puts more track on the ground for better traction while increasing stability.

4 Simple, open design allows for quick, easy service access.



CX SERIES WALK-BEHIND TRENCHERS SPECIFICATIONS

DIMENSIONS*	C16X	C24X	C30X
Headshaft height	13.7 in (348 mm)	13.7 in (348 mm)	13.7 in (348 mm)
Length (up to)	94 in (2.4 m)	94 in (2.4 m)	101 in (2.6 m)
Width, transport	35.8 in (909 mm)	35.8 in (909 mm)	35.8 in (909 mm)
Height, transport (up to)	63 in (1.6 m)	63 in (1.6 m)	75 in (1.9 m)
Centerline trench to outside edge machine			
Left	17.2 in (437 mm)	17.2 in (437 mm)	17.2 in (437 mm)
Right	18.6 in (472 mm)	18.6 in (472 mm)	18.6 in (472 mm)
POWER			
Engine	Briggs & Stratton® Vanguard™ 16*	Honda® GX690**	Briggs & Stratton Vanguard 31*
Fuel	Gasoline	Gasoline	Gasoline
Cooling medium	Air	Air	Air
Number of cylinders	2	2	2
Manufacturer's net horsepower rating*	16 hp (11.9 kW)	22 hp (16.4 kW)	31 hp (23.1 kW)
Rated speed	3,600 rpm**	3,600 rpm**	3,600 rpm*
Fuel consumption @ rated power	1.33 gph (5 LPH)	1.77 gph (6.7 LPH)	2.49 gph (9.4 LPH)
POWER TRAIN			
Ground drive transmission: hydraulic, Infinite variable from zero to maximum, speed and direction control			
Digging chain drive: hydraulic direct drive, one speed forward and reverse			
Pump drive: direct drive from engine			
Track width	8 in (200 mm)	8 in (200 mm)	8 in (200 mm)
Trencher drive			
Hydraulic	Direct drive	Direct drive	Direct drive
Digging chain	19K, 33K and 35K	19K, 33K and 35K	19K, 33K and 35K
Ground pressure	4.5 psi	4.5 psi	5 psi
OPERATION			
Vehicle speeds, max			
Transit forward	120 fpm (36.6 m/min)	176 fpm (53.6 m/min)	176 fpm (53.6 m/min)
Transit reverse	120 fpm (36.6 m/min)	136 fpm (41.5 m/min)	136 fpm (41.5 m/min)
Digging chain speed @ 3,600 rpm			
19K	366 fpm (111.56 m/min)	366 fpm (111.56 m/min)	366 fpm (111.56 m/min)
33/35K	309 fpm (94.2 m/min)	309 fpm (94.2 m/min)	309 fpm (94.2 m/min)
Spoil handling			
Auger, type	Single, open end	Single, open end	Single, open end
Auger, diameter	17 in (432 mm)	17 in (432 mm)	17 in (432 mm)
Trench cleaner type	Mechanical	Mechanical	Mechanical
Trench cleaner size	4-6 in (102-152 mm)	4-6 in (102-152 mm)	4-6 in (100-152 mm)
Operating weight (up to)	1,895 lb (860 kg)	1,915 lb (869 kg)	2,100 lb (453 kg)
HYDRAULIC SYSTEM @ 3,600 RPM			
Digging drive pump capacity	10 gpm (37.85 l/min)	10 gpm (37.85 l/min)	10 gpm (37.85 l/min)
Filtration	10 micron absolute	10 micron absolute	10 micron absolute
FLUID CAPACITIES			
Fuel tank	2.3 gal (6.5 L)	6.2 gal (23.5 L)	6.2 gal (23.5 L)
Engine oil	1.5 qt (1.46 L)	1.8 qt (1.7 L)	2.4 qt (2.27 L)
Hydraulic system	11 gal (42 L)	11 gal (42 L)	11 gal (42 L)
TRENCH SIZE, MAX			
Depth	36 in (914 mm)	36 in (914 mm)	48 in (1219 mm)
Width	6 in (152 mm)	6 in (152 mm)	6 in (152 mm)
NOISE LEVEL			
Ear sound pressure	87 dBA ISO 6394	91 dBA per ISO 6394	93 dBA per ISO 6394
Overall sound pressure	97 dBA per ISO 6393	100 dBA per ISO 6393	103 dBA per ISO 6393
VIBRATION LEVEL			
	Operators hand less than 2.5 m/s ²	Operators hand less than 2.5 m/s ²	Operators hand less than 2.5 m/s ²



* SAE J1940 Gross or Net. ** SAE J1349 Net.
 Specifications are general and subject to change without notice. If exact measurements are required, equipment should be weighed and measured.
 Due to selected options, delivered equipment may not necessarily match that shown.



WALK-BEHIND TRENCHER PARTS, ACCESSORIES AND SUPPORT:



TRAILER

Featuring a durable, high-strength axle and a steel deck, the Ditch Witch® S2B single-axle trailer is designed specifically for our walk-behind trenchers. Standard features include ramps for easy loading and unloading, tie-down points, tongue safety chain, and a complete lighting system.



DEALER SERVICE AND SUPPORT

Whether it's new or used equipment, parts, service, financing, or all of the above, your Ditch Witch dealer is prepared to offer you the best of everything. Ditch Witch dealers are chosen for their commitment to the underground construction profession, and they are thoroughly trained to represent the highest standards in the industry.



GENUINE DITCH WITCH PARTS

Your Ditch Witch dealer is your single source for all of the parts you need, including superior-quality digging systems. Ditch Witch chain, specially manufactured headshaft sprockets and digging teeth are designed to work together as a system to provide unparalleled trenching performance.

